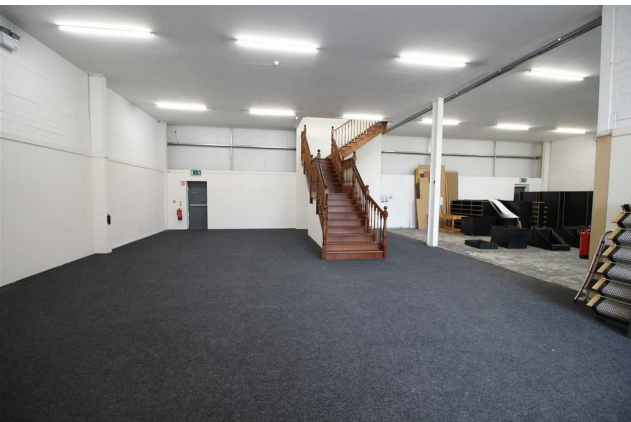




Units 3 & 4 Roseville Bus. Park, Turvey, Donabate, Co. Dublin
€895,000



High Specification Showroom / Warehouse / Commercial Premises Extending to
Approx. 720.9 sq.m. (7,759 sq.ft.)



Units 3 & 4 Roseville Bus. Park, Turvey, Donabate, Co. Dublin

This impressive commercial premises extends to approximately 720.9 sq.m. (7,759 sq.ft.) over ground and first floor levels and occupies a prominent position within the well-established Turvey Business Park.

The property currently provides a high-quality mix of showroom, office and warehouse accommodation, finished to an excellent standard throughout.

Offering bright, modern and highly adaptable space, the building is suitable for a broad range of commercial uses including trade counter, showroom, distribution, warehousing, office, storage and light industrial operations.

The flexible internal configuration provides occupiers with the opportunity to tailor the space to their individual requirements, while the property's original design as two separate units presents potential for future subdivision if desired.

Donabate has experienced significant growth in recent years and continues to attract both residential and commercial development, making it an increasingly sought-after business destination. The surrounding area is home to a range of established commercial occupiers and offers excellent transport infrastructure, ensuring convenient access for staff, customers and suppliers alike.

The property presents an excellent opportunity for owner occupiers, investors or expanding businesses seeking a modern, adaptable commercial facility in one of North Dublin's most accessible business parks. The combination of location, specification and flexibility makes it suitable for a wide range of commercial and industrial occupiers.

LOCATION

Turvey Business Park is a strategic commercial location situated Close to Donabate, North County Dublin, offering exceptional accessibility to the wider Dublin region. The park benefits from immediate connectivity to the M1 Motorway, providing direct access to Dublin Airport, the M50, Dublin Port and Dublin City Centre.

FEATURES

- Approx. 720.9 sq.m. (7,759 sq.ft.) of accommodation over two floors
- High-quality commercial premises suitable for a variety of uses
- Flexible showroom, office and warehouse accommodation
- Potential to reconfigure into two separate units
- Two roller shutter loading doors (approx. 4.16m high)
- Internal eaves height of approximately 4.38m
- Two pedestrian entrances
- Two rear emergency exits
- Three-phase electricity supply
- CAT5 structured cabling throughout
- CCTV security system
- Fire alarm system installed
- Extensive power and data points throughout
- Modern lighting and excellent natural light
- Dedicated on-site parking
- Excellent loading and circulation facilities
- Strategic North Dublin location with immediate access to the M1 Motorway
- Convenient access to Dublin Airport, the M50 and Dublin City Centre

FOR FURTHER DETAILS

Contact Darren Whelan on 046 9027666



Donabate



0469027666

38 Watergate Street, Navan, Co. Meath, C15 PT8X
raymondpotterton.com

Follow us:

