





Retail Unit – c. 2,900 sq. ft.

Unit 2, Kennedy Road Navan Co. Meath C15 DVX4

Raymond Potterton Auctioneers are delighted to present this excellent retail opportunity, ideally located in the heart of Navan Town Centre, just off Kennedy Road and directly opposite Navan Shopping Centre.

This property comes to the market in excellent condition and offers a blank canvas, ready for a new tenant to fit out to their own specification.

Extending to approximately 2,900 sq. ft., this substantial and well-laid-out unit is suitable for a wide variety of retail or commercial uses.

The main shop floor measures approximately 19m x 11.1m, providing a bright, spacious, open-plan area with LED lighting throughout and a roller shutter entrance.

To the rear, there is a large storeroom (c. 6m x 8.87m) with security doors, offering excellent storage capacity.

Additional accommodation includes:

- Back office (c. 3.7m x 1.95m) with CCTV system and safe
- Canteen (c. 2m x 2.38m)
- Staff WC (c. 1.85m x 2.36m) with WHB
- Heating and air conditioning system

The unit is fully fitted with CCTV, ensuring a secure, ready-to-occupy premises.

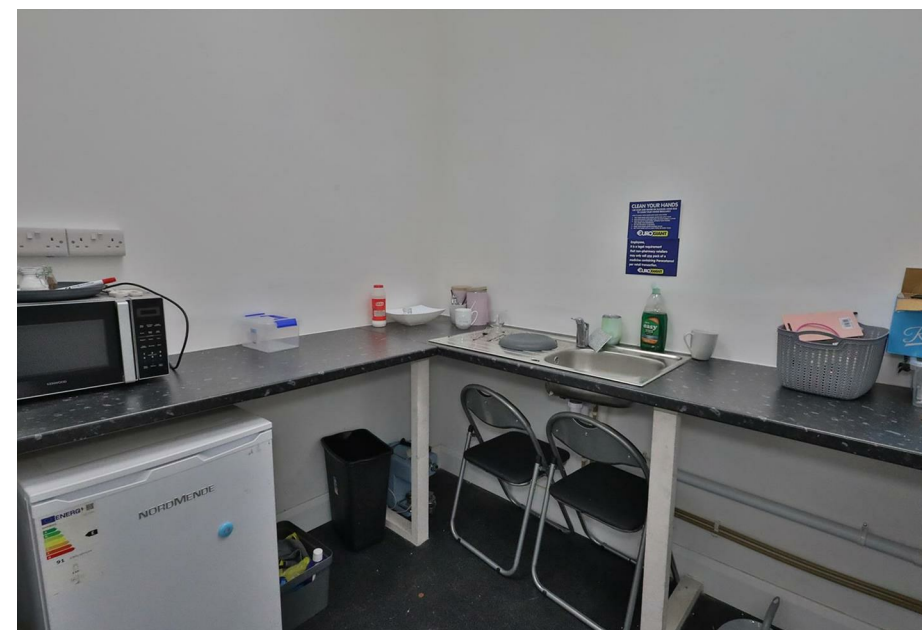
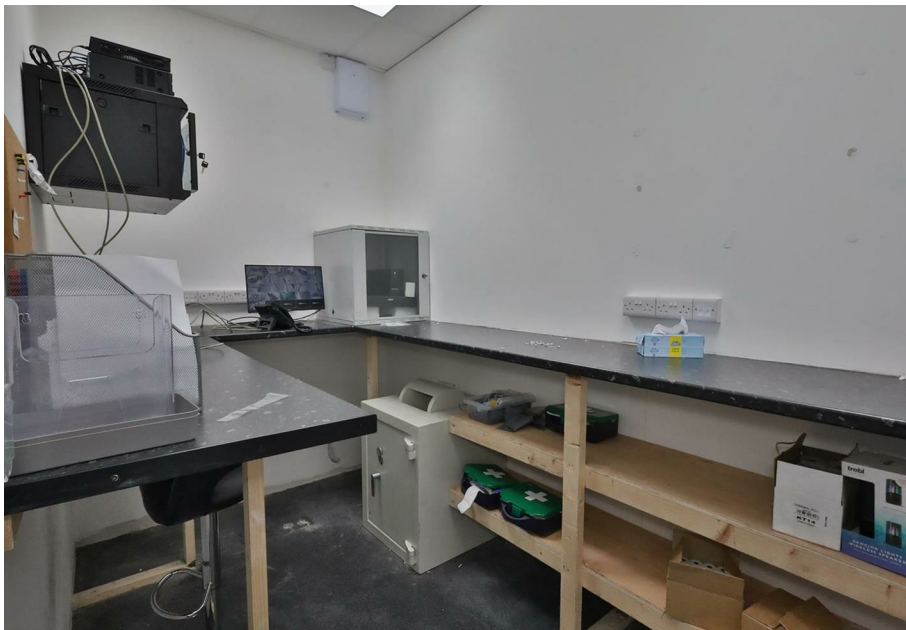
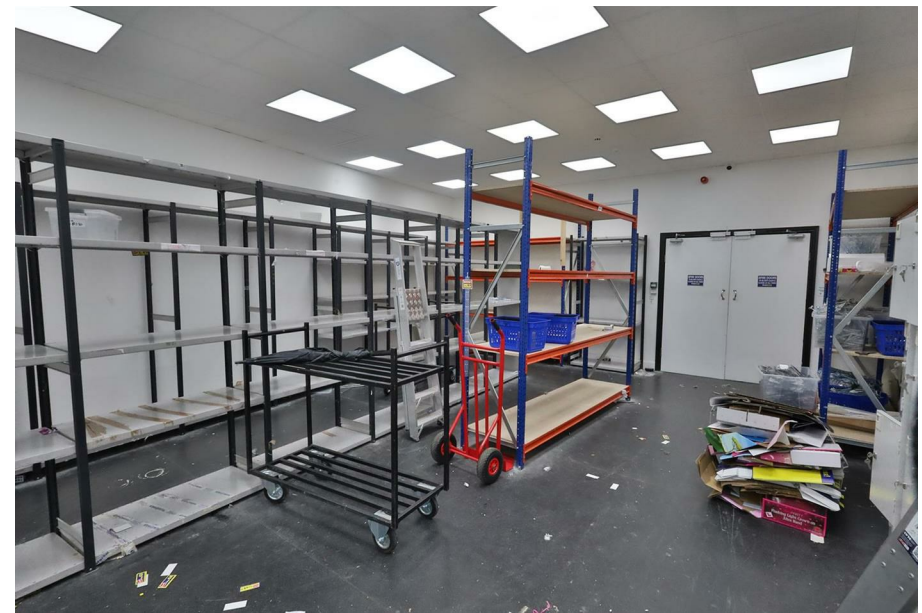
FEATURES

- Rear Service Yard with entrance
- Suitable for a Variety of Uses
- Prominent Town Centre Location
- Excellent Passing Trade
- Ready for Immediate Occupation

FOR FURTHER DETAILS

Contact Darren Whelan on 046 9027666





0469027666

38 Watergate Street, Navan, Co. Meath, C15 PT8X
raymondpotterton.com

Follow us:

