

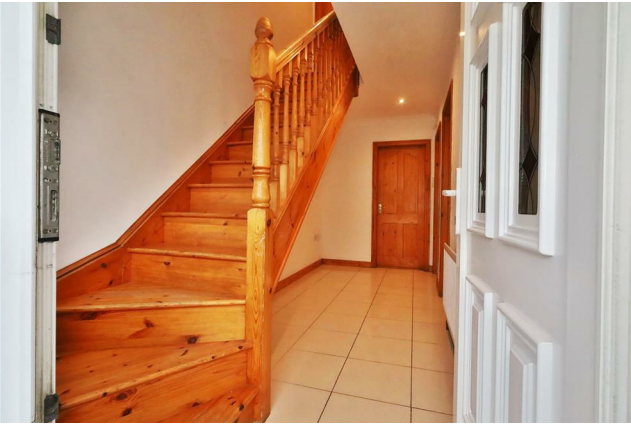


18 Hillside Drive, Castletown, Navan, Co. Meath, C15 HY36

€249,000





**Raymond
Potterton**





An excellently presented 3 bedroom mid terrace property extending to over 95 sq.m situated in the highly regarded development Hillside Drive located in Castletown Village only 15 kms North of Navan Town.



18 Hillside Drive, Castletown, Navan, Co. Meath,

 1022.57 sq ft

 3 Bedrooms

 1 Bathrooms

INTRODUCTION

Internally the property benefits from a practical layout with a separate lounge and an open plan kitchen / dining room that makes it perfect for modern family living. This property benefits from a converted attic space, accessed via a stira stairs which offers excellent space for storage or further accommodation.

To the front of the property there is a walled in driveway with ample room for parking and a maintenance free garden to the rear.

Castletown Village is a very well-maintained area and the development itself Hillside Drive has many pride of place awards. The greenway from Navan to Kingscourt with an access in Castletown is an amazing amenity close to this property. All local amenities are within walking distance of the property to include shop, pub, national school, church, GAA pitch and pitch and putt grounds.

Accommodation includes Entrance Hall, Lounge, Kitchen, Dining Room, 3 Bedrooms and Bathroom.

FEATURES

- Spacious mid terrace residence
- Presented in excellent condition
- Extremely well-maintained development
- Picturesque Village with greenway close by
- All local amenities on the doorstep
- Spacious driveway and back garden
- Oil fired & solid fuel central heating
- Water softener in attic
- TV points in all rooms
- Double glazed PVC windows & doors





FIXTURES & FITTINGS

All flooring, blinds, curtains, light fittings, oven, hob, extractor fan, integrated fridge freezer, integrated dishwasher and washing machine are included in the sale.



ACCOMMODATION

Entrance Porch

With tiled flooring, glass sliding door to front and PVC door with glass panel insert to Entrance Hall

Entrance Hall

15'9" x 5'11"

With tiled flooring and ceiling coving.

Lounge

14'5" x 11'8"

With wooden flooring, open fire with feature wooden matlepiece and tiled hearth, TV point and coving.

Dining Room

11'7" x 10'0"

With wooden flooring, oil burning Range Cooker and built in storage.

Kitchen

13'11" x 10'4"

With tiled flooring, built in wall to floor units, laminate worktop, splashback tiling, oven, hob, extractor fan, integrated dishwasher, integrated fridge freezer, integrated microwave and stainless-steel sink.

Utility Room

6'7" x 5'8"

With tiled flooring, built in wall to floor units, laminate worktop, stainless steel sink and plumbed for washing machine.

Bathroom

13'2" x 6'2"

With tiled flooring, fully tiled walls, jacuzzi bath, shower, w.h.b and w.c.

Landing

With carpet.

Bedroom 1

13'0" x 9'8"

With wooden flooring and built in wardrobes.

Bedroom 2

11'5" x 6'7"

With wooden flooring and built in wardrobes.

Bedroom 3

9'1" x 8'2"

With wooden flooring.

Attic Room

16'0" x 9'10"

Acces via stira only, with wooden flooring, 2x velux windows and built in storage.

DIRECTIONS

EIRCODE: C15 HY36

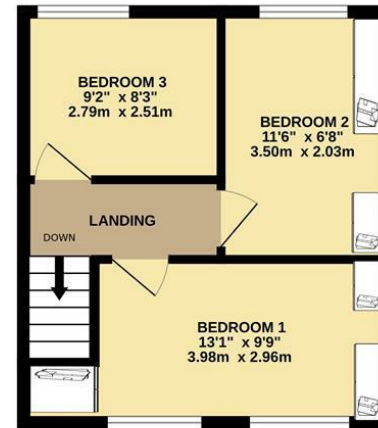


FLOOR PLAN

GROUND FLOOR



1ST FLOOR



TOTAL FLOOR AREA : 1023sq.ft. (95.0 sq.m.) approx.

Whilst every attempt has been made to ensure the accuracy of the floorplan contained here, measurements of doors, windows, rooms and any other items are approximate and no responsibility is taken for any error, omission or mis-statement. This plan is for illustrative purposes only and should be used as such by any prospective purchaser. The services, systems and appliances shown have not been tested and no guarantee as to their operability or efficiency can be given.
Made with Metropix ©2026

