





## TO LET

### 450 sqm Warehouse

An excellent holding to let of c.450 sqm warehouse on a large secure premises located within easy reach of Dublin close to Dunshaughlin and Dunboyne.

The property is suitable for many uses including storage & distribution, agricultural enterprise or Many commercial uses.

The premises is very secure & The rental rate is very reasonable for the size of the offering with flexible lease terms are available.

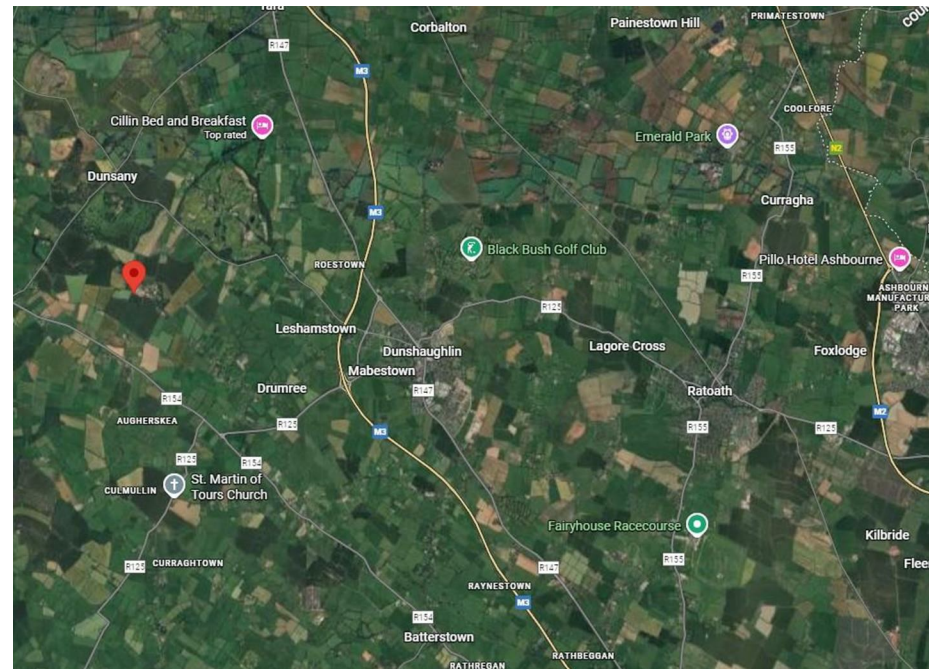
The unit will feature 3 phase power and secure roller doors as well as ample yard space surrounding the premises.

## FOR FURTHER DETAILS

Contact Darren Whelan on 046 9027666

## DIRECTIONS

EIRCODE: A85 CV61



**0469027666**

38 Watergate Street, Navan, Co. Meath, C15 PT8X  
raymondpotterton.com

Follow us:

