





TO LET

RETAIL UNIT - c.240 sq.ft.

Ready to trade. This nice unit on Metges Lane is in the heart of Navan Town, just off the main shopping artery of Kennedy road.

Properties close by include large financial institutions, coffee shops, Navan shopping centre, and a number of other thriving businesses. This property comes to the market in excellent condition and will suit many uses. Was previously in use as a tattoo parlor.

### FEATURES

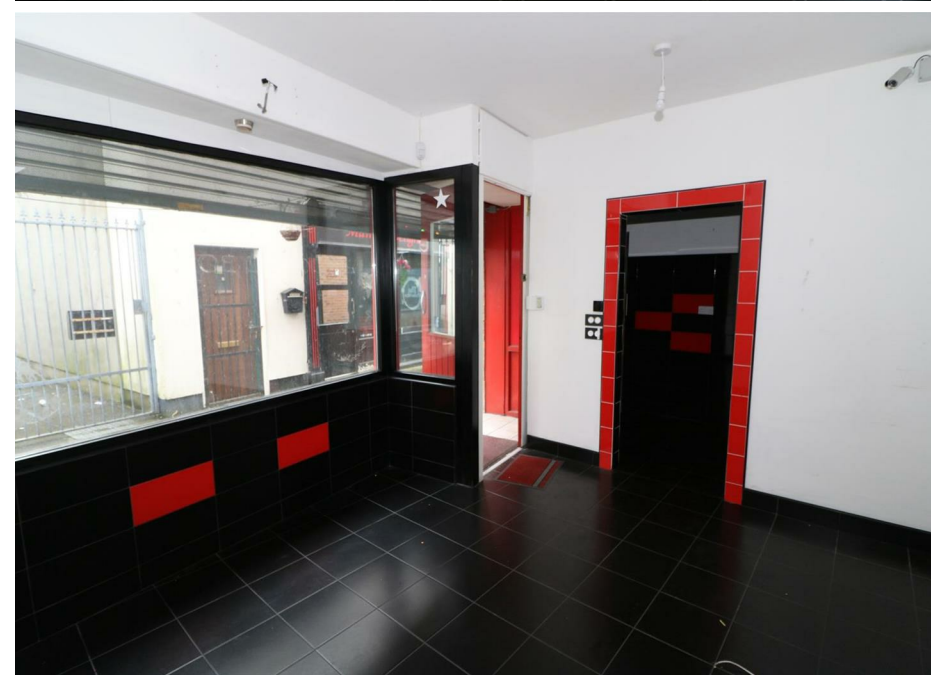
- \* Suit Many Uses
- \* Prominent position
- \* Good passing trade
- \* Toilets
- \* Flexible lease terms available
- \* Ready for immediate occupation
- \* Electric Roller Shutter

### DIRECTIONS

The property is in Navan Town Centre, on Metges lane, directly across from AIB bank and can be identified by our "To Let" Board.

### FOR FURTHER DETAILS

Contact Darren Whelan on 046 9027666



**0469027666**

38 Watergate Street, Navan, Co. Meath, C15 PT8X  
raymondpotterton.com

Follow us:

