







Raymond Potterton Auctioneers are delighted to present to the market an attractive investment opportunity comprising seven apartments within a well-maintained gated complex on Convent Road, Navan.

The apartments are divided across Blocks A and B and represent a rare opportunity to acquire a compact, income-producing residential portfolio in one of Navan's most sought-after locations.



# Aras Bovinda, Convent Road, Navan, Co. Meath

## INTRODUCTION

Some of the apartments are currently occupied. Each apartment has its own electricity meter. There is no management company in place – block insurance, public services, and lighting are managed directly by the owner.

## BLOCK A

Apartment No. 1: 2 bed, 2-bath apartment extending to 79 sqm. BER - D1

Apartment No. 2: 2 bed, 2-bath apartment extending to 79 sqm. BER - D2

Apartment No. 3: 2 bed, 1 bath apartment extending to 75 sqm. BER - D1

Apartment No. 4: 2 bed, 1 bath apartment extending to 75 sqm. BER - D2

## BLOCK B

Apartment No. 5: 2 bed, 2 bath apartment extending to 65 sqm. BER - D1

Apartment No. 6: 2 bed, 2 bath apartment extending to 65 sqm. BER - D1

Apartment No. 7: 2 bed, 2 bath apartment extending to 75 sqm. BER - D1

Together, the portfolio has potential to produce a significant rent roll, offering a substantial and reliable return for investors seeking a strong residential holding with proven rental demand.

All apartments are registered with the Residential Tenancies Board (RTB). The complex benefits from secure gated access, private parking, and electric storage heating throughout. Built circa 2003, the apartments have been consistently rented since completion and is in good condition overall.

The property is ideally located just off Convent Road, directly opposite Loreto Secondary School, and within a short walk of Navan Town Centre. The area remains one of Navan's most desirable addresses, benefiting from excellent access to local amenities, schools, and public transport.

## KEY FEATURES

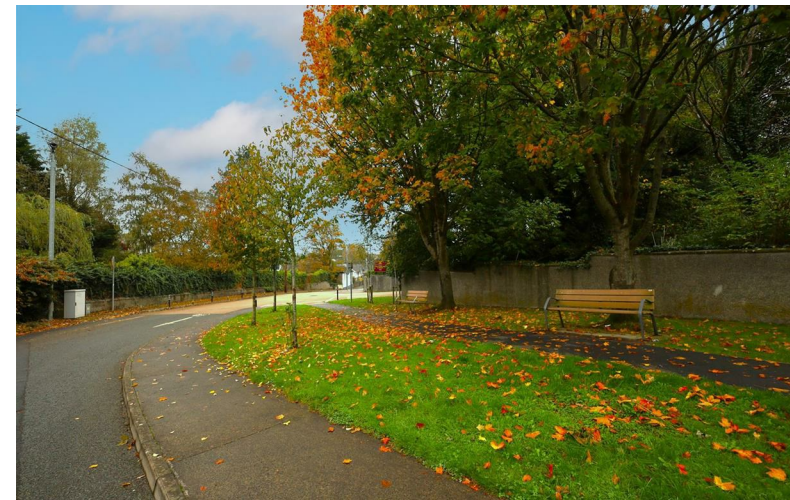
- Seven apartments offered together in one lot
- Overlooking the River Boyne
- No management company – owner-managed services
- Gated complex with private parking
- Prime Navan location opposite Loreto Secondary School
- Consistently rented since construction c. 2003

## FOR FURTHER DETAILS

Contact Rosemary McKeown or Sean McRedmond on 046 9027666

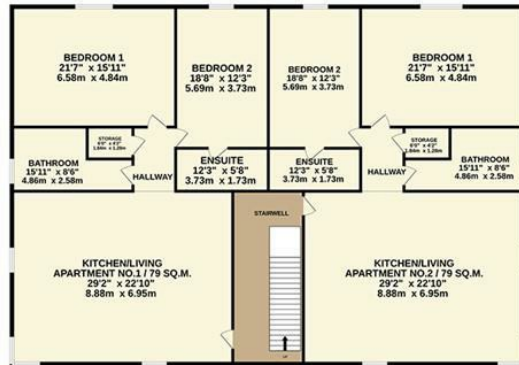
## DIRECTIONS

C15 E098

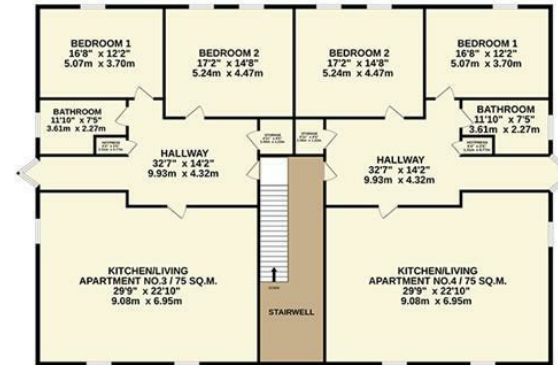


# BLOCK A

GROUND FLOOR

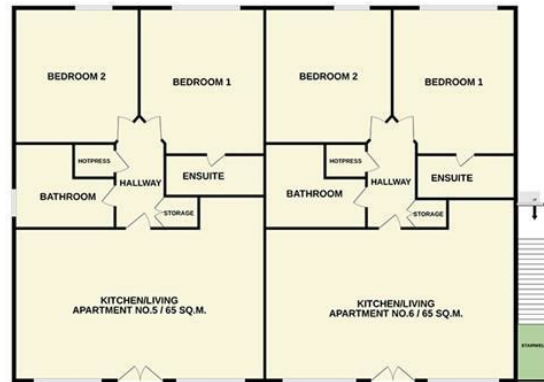


1ST FLOOR



# BLOCK B

GROUND FLOOR



1ST FLOOR

