







**23.64 Acres (c. 9.57 Hectares)**

**An excellent parcel of land extending to approximately 23.64 acres in Collierstown, Tara, one of Co. Meath's most sought after agricultural districts. The holding is laid out in three well proportioned fields of permanent pasture, enclosed by mature hedging and fencing.**



# Collierstown Tara Co. Meath

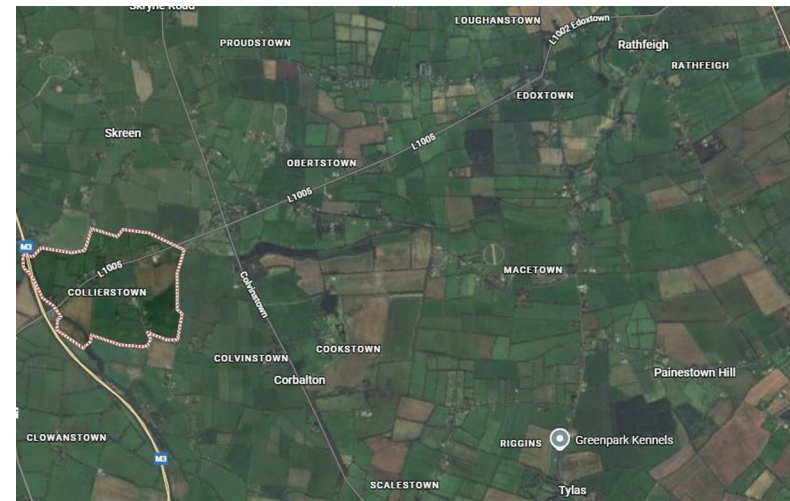
The lands are supported by useful facilities including a well fenced holding yard, handling facilities and a small shed, ensuring the property is immediately fit for livestock use. Currently all in grass, the lands are of fine quality and lend themselves to a wide variety of agricultural enterprises.

The southern boundary enjoys substantial road frontage to the L1005. This frontage lies between an established linear residential development and is further enhanced by a footpath, offering strong long term potential subject to the relevant planning consents.

The setting is exceptional, within sight of the Hill of Tara and Skryne Tower, the lands occupy a historic and highly regarded location. Navan lies just fifteen minutes away, while Dunshaughlin can be reached in eight minutes, with the M3 motorway providing swift access to Dublin and the M50.

## KEY FEATURES

- 23.64 Acres (c. 9.57 Hectares) in three fields
- Secure handling facilities and small shed
- Substantial road frontage with footpath
- Between established residential development
- Prime Tara/Skryne location, close to M3, Navan and Dunshaughlin







**0469027666**

38 Watergate Street, Navan, Co. Meath, C15 PT8X  
raymondpotterton.com

Follow us:

