








Located in the ever-popular Tara Court Estate just off Clonmagadden Road, this superb three-bedroom semi-detached residence, extending to 100 sq.m, enjoys a prime position on an extra-large corner site, offering exceptional outdoor space and a beautifully maintained interior.

1 Tara Court Square Navan Co. Meath C15 K0W2

 1076.00 sq ft

 3 Bedrooms

 2 Bathrooms

INTRODUCTION

The property boasts a striking exterior with a large walled driveway providing ample off-street parking. The standout rear garden is both private and mature, featuring well maintained lawns and pear and plum trees in each corner, making it ideal for outdoor dining or family enjoyment.

Inside, the home is light-filled and thoughtfully laid out. Presented in excellent condition throughout, the accommodation includes entrance hall, lounge, kitchen/dining room, dining room, guest W.C, three bedrooms (master ensuite), and bathroom.

To the front, the home enjoys uninterrupted views over a beautifully landscaped green area, enhancing its peaceful and attractive setting.

Tara Court is just a short walk from Tesco and McCartan's Pharmacy Cluain Adain, Blackcastle Shopping Centre, local schools and numerous recreational amenities, including the Aura Leisure Complex. Navan Town Centre is also within easy reach, while excellent road access to the M3 and N2 offers a direct commute to Dublin.

FEATURES

- Excellently presented throughout
- Extra-large corner site
- Beautifully landscaped rear garden with mature fruit trees
- Generous front driveway with ample off-street parking
- Attractive setting overlooking a green open space
- Gas fired central heating
- Gated side entrance and garden shed
- Walking distance to shops, schools, and sports facilities
- Easy access to M3 & N2 routes





FIXTURES & FITTINGS

All flooring, light fittings, oven, hob, extractor fan, washing machine, dishwasher, fridge/freezer and garden shed are included in the sale.

ACCOMMODATION

Entrance Hall

15'9" x 5'2"

With wooden flooring and solid wood front door with glass panel insert.

Lounge

17'10" x 11'5"

With wooden flooring, open fire with feature fireplace and tiled hearth and TV point.

Dining Room

11'6" x 8'6"

With wooden flooring and sliding door to rear garden.

Kitchen

20'3" x 8'0"

With lino flooring, wooden built in wall to floor units, oven, electric hob, extractor fan and stainless-steel sink.

Guest w.c.

5'6" x 2'1"

With wooden flooring, w.h.b and w.c.

Landing

With carpet and hotpress.

Bedroom 1

12'8" x 11'1"

With wooden flooring and built in wardrobes.

Ensuite

5'7" x 4'8"

With tiled flooring, electric shower, w.h.b and w.c.

Bedroom 2

10'8" x 9'6"

With wooden flooring and built in wardrobes.

Bedroom 3

8'3" x 7'2"

With wooden flooring.

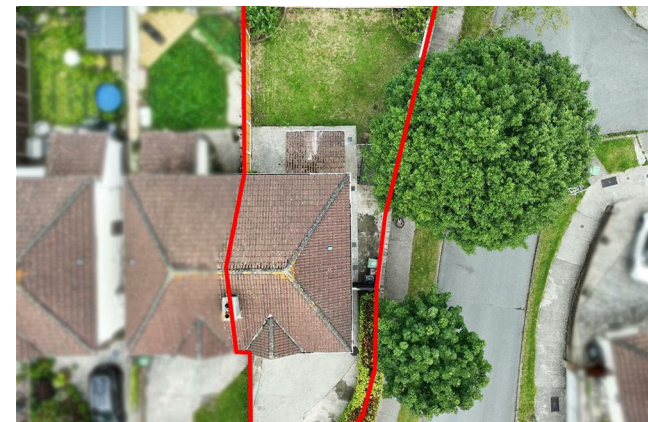
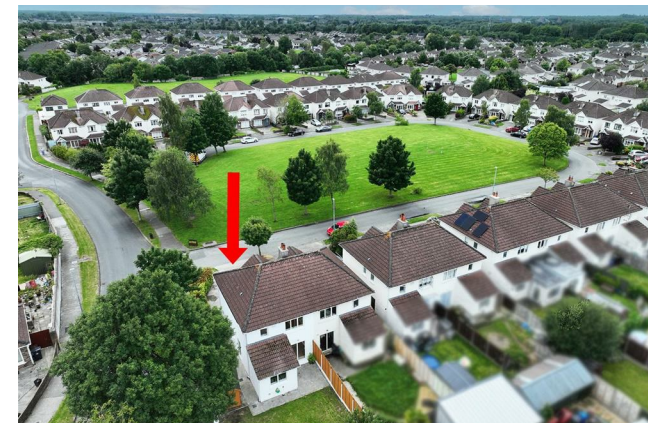
Bathroom

6'5" x 5'7"

With lino flooring, bath, w.h.b and w.c.

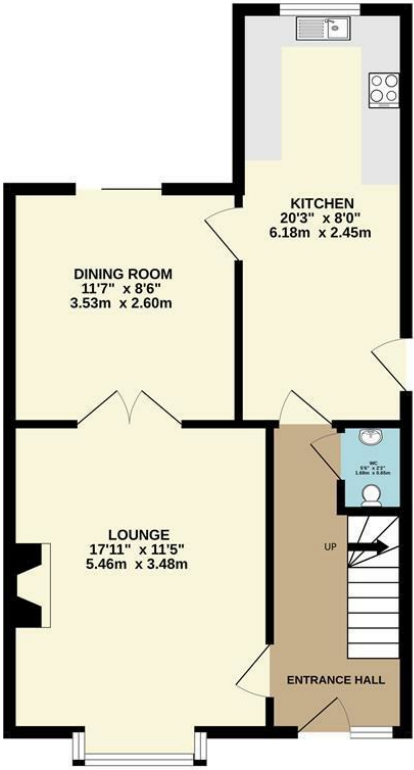
DIRECTIONS

EIRCODE: C15 K0W2

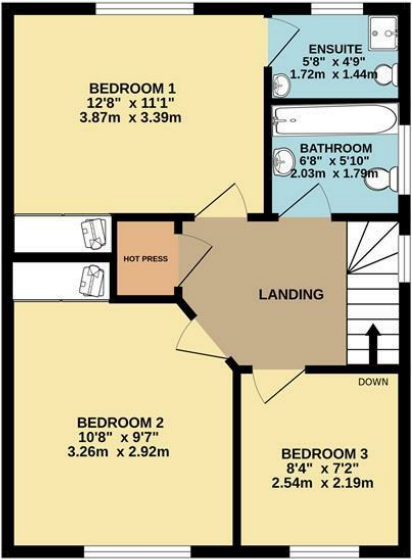


FLOOR PLAN

GROUND FLOOR



1ST FLOOR



TOTAL FLOOR AREA: 1076sq.ft. (100.0 sq.m.) approx.

Whilst every attempt has been made to ensure the accuracy of the floorplan contained here, measurements of doors, windows, rooms and any other items are approximate and no responsibility is taken for any error, omission or mis-statement. This plan is for illustrative purposes only and should be used as such by any prospective purchaser. The services, systems and appliances shown have not been tested and no guarantee as to their operability or efficiency can be given.
Made with Metropix ©2025

