



6 Turry Close, Athboy, Co. Meath, C15 EC60

€225,000

BER D1



Raymond
Potterton





6 Turry Close is an excellent two bedroom first floor apartment extending to c. 81 sq.m. situated in a lovely mature residential development in Athboy. Positioned in a block of just 8 apartments the property overlooks a lovely green open space.



6 Turry Close, Athboy, Co. Meath, C15 EC60

 872.00 sq ft

 2 Bedrooms

 1 Bathrooms

INTRODUCTION

The apartment itself is extremely spacious, both the living and bedroom accommodation are very well proportioned. The property is bright and is presented in very good condition.

Accommodation includes Entrance Hall, Lounge, Kitchen, 2 Bedrooms and Bathroom.

The location is superb just off Connaught Street within walking distance of all amenities in Athboy Town and the M3 is also very accessible from Athboy.

FEATURES

- Spacious first floor apartment
- Presented in excellent condition
- Balcony to the rear
- Management fee - €800 p.a.
- Two parking spaces
- Attic space
- Double glazed windows
- PVC fascia and soffit
- Electric heating





FIXTURES & FITTINGS

All flooring, curtains, blinds, light fittings, oven, hob, extractor fan, dishwasher, fridge freezer and washing machine are included in the sale.



ACCOMMODATION

Entrance Hall

16'9" x 5'2"

With carpet and hotpress.

Lounge

18'11" x 13'1"

With carpet, T.V point and bay window to the front.

Kitchen/Dining Room

12'0" x 11'3"

With tiled flooring, wall to floor units, oven, electric hob, dishwasher, fridge freezer and sliding door to balcony.

Bedroom 1

11'10" x 10'5"

With wooden flooring and built in wardrobe.

Bedroom 2

11'11" x 9'7"

With wooden flooring and built in wardrobe.

Bathroom

11'11" x 5'1"

With tiled flooring, electric shower, w.h.b, vanity unit and w.c.

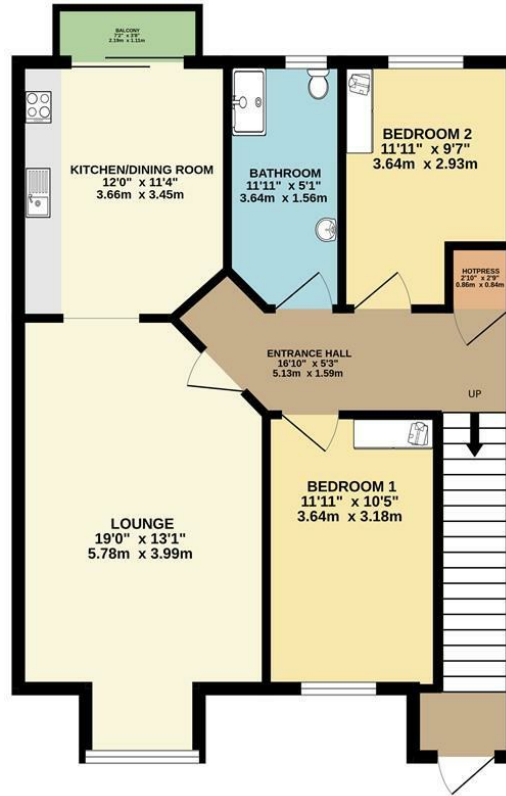
DIRECTIONS

EIRCODE: C15 EC60



FLOOR PLAN

GROUND FLOOR



TOTAL FLOOR AREA: 872sq.ft. (81.0 sq.m.) approx.

Whilst every attempt has been made to ensure the accuracy of the floorplan contained here, measurements of doors, windows, rooms and any other items are approximate and no responsibility is taken for any error, omission or mis-statement. This plan is for illustrative purposes only and should be used as such by any prospective purchaser. The services, systems and appliances shown have not been tested and no guarantee as to their operability or efficiency can be given.

Made with Metropix C2025

