



Leitrim Upper Moynalty Co. Meath

35.00 acre(s)

FARM TO LEASE

35 ACRES (14.16 HECTARES)

Raymond Potterton Auctioneers are pleased to present approximately 35 acres of permanent pasture available for lease. The lands are located in Leitrim Upper, Moynalty, Co. Meath and benefits from well water. The land consists of two primary parcels the larger one, approximately 21 acres is of higher quality, while the remaining 14 acres is located to the east of the dividing road.

The subject lands are available without entitlements. The lands are being leased in bulk in accordance with the folio map, it is up to lessee to do their due diligence in terms of usable area. Grazing on the lands can commence March 1st on each year of the term and livestock must be removed no later than December 1st.

No overwintering of stock or storage of bales thereon. The first moiety is to be paid prior to the 1st of March & the 1st of September each year, access is not permitted until payment is received.

LOCATION

Ideally located, the land is approximately 7km from the village of Mullagh. The lands are c.9km north west of Moynalty and c. 17km north east of Kells.

FEATURES

- Great Location
- Neat Divisions
- Well Water

ENTITLEMENTS

The subject lands are being leased without entitlements.

LEASE TERM

7 Years.

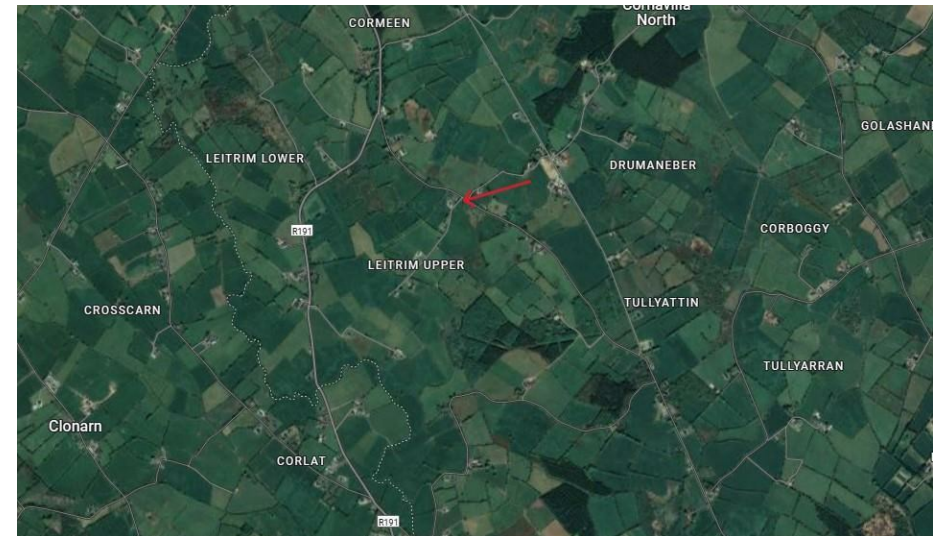
VIEWING

By Appointment.

DIRECTIONS

<https://maps.app.goo.gl/GTxxfJLmtjk4tdjv8>

From Mullagh, take the R191 towards Baillieborough. After approximately 5 km, turn right at the Y-junction. The lands are located a short distance down this road and can be easily identified by the Raymond Potterton sign.



0469027666

38 Watergate Street, Navan, Co. Meath, C15 PT8X
raymondpotterton.com

Follow us:

