




Raymond
Potterton

Clonmore House, Harristown Navan, Co. Meath C15F3FC

€595,000


BER C3





New to the market, this stunning large 6 bedroom family home extending to approximately 245 sqm.



Clonmore House, Harristown Navan, Co. Meath C15F3FC

 2637.00 sq ft

 6 Bedrooms

 4 Bathrooms

INTRODUCTION

Located in the townland of Harristown, just a few minutes' drive from the bustling town of Navan, this popular address offers peaceful countryside living while being within easy reach of all local amenities and with excellent access to Dublin (c. 25-minute drive to the M50).

This elegant property boasts spacious living accommodation throughout, a built-in sauna, landscaped gardens, and a large garage, all set on a site extending to c0.55 acres.

Accommodation comprises a spacious entrance hall with a feature stairwell, a kitchen/dining room, an open-plan living room, a reception room, a utility room, an office/bedroom, five further bedrooms and four bathrooms.

The area offers a wealth of amenities to cater to the modern family's needs, including Royal Tara Golf Club, GAA, rugby, fishing, and horse riding—not to mention the beautiful historical sites in the immediate vicinity.

FEATURES

- Large spacious residence c.245 sqm.
- Open plan living space
- Built in storage in all bedrooms
- Double glazed windows
- PVC fascia and soffit
- Detached Garage
- Oil fired central heating
- Fibre Broadband
- Own Well (Mains available)





FIXTURES & FITTINGS

All flooring, curtains, blinds, light fittings, appliances and Sauna are included in the sale.

ACCOMMODATION

Entrance Hall

7'9" x 16'4"
With tiled flooring.

Lounge

11'2" x 14'6"
With wooden flooring, open fire and feature fireplace.

Kitchen

15'3" x 18'5"
With tiled flooring, built in wall and floor units, extractor fan, oven / hob, dishwasher and fridge / freezer.

Utility Room

15'3" x 18'5"
With tiled flooring and built in storage.

Living / Dining Room

15'5" x 35'3"
With wooden flooring, French doors to the patio, open fire and feature fireplace.

Guest w.c.

5'10" x 6'3"
With tile flooring, w.h.b, w.c., and shower.

Bedroom 1

9'0" x 19'0"
With wooden flooring.

Ensuite

5'10" x 5'10"
With tile flooring, w.h.b, w.c, and shower.

Sauna

3'11" x 5'9"

Bedroom 2

14'8" x 15'8"
With wooden flooring.

Bedroom 3

10'4" x 11'9"
With wooden flooring and shelves.

Back Hall

6'11" x 18'7"
With tiled flooring.

Landing

7'4" x 21'10"
With wooden flooring.

Bedroom 4

12'0" x 13'3"
With wooden flooring and a walk-in wardrobe.

Ensuite

5'9" x 7'4"
With wooden flooring, w.h.b, w.c, and shower.

Bedroom 5

10'10" x 12'7"
With wooden flooring and a walk-in wardrobe.

Bedroom 6

9'6" x 10'6"
With wooden flooring and a walk-in wardrobe.

Bathroom

10'11" x 12'9"
With wooden flooring, w.h.b, w.c, shower and bath.

Garage

Block built with wooden garage door.

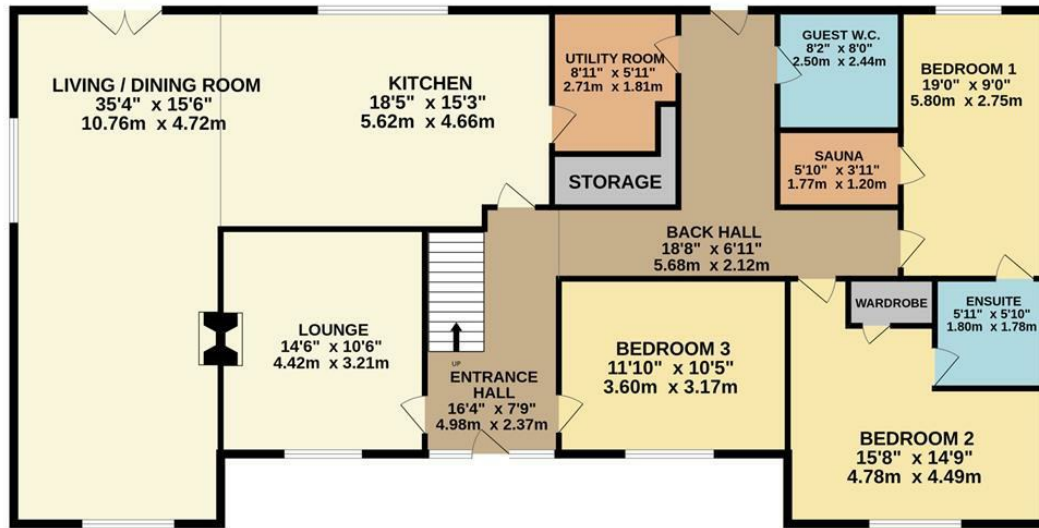
DIRECTIONS

Eircode: C15 F3FC

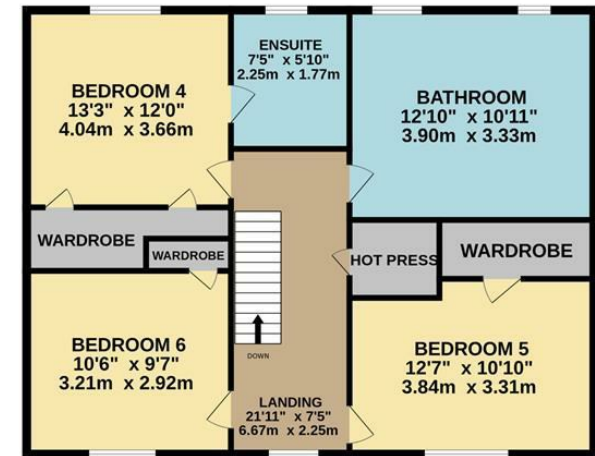


FLOOR PLAN

GROUND FLOOR



1ST FLOOR



TOTAL FLOOR AREA : 2637sq.ft. (245.0 sq.m.) approx.

Whilst every attempt has been made to ensure the accuracy of the floorplan contained here, measurements of doors, windows, rooms and any other items are approximate and no responsibility is taken for any error, omission or mis-statement. This plan is for illustrative purposes only and should be used as such by any prospective purchaser. The services, systems and appliances shown have not been tested and no guarantee as to their operability or efficiency can be given.
Made with Metropix ©2024

