



17 Moathill Manor Navan Co. Meath C15 VN23

€195,000








A very impressive two bedroom ground floor apartment extending to c. 70 sq.m. set in the exclusive and small development of Moathill Manor. This property is extremely spacious and is presented in excellent condition.



17 Moathill Manor Navan Co. Meath C15 VN23

 753.00 sq ft

 2 Bedrooms

 2 Bathrooms

INTRODUCTION

The apartment has a lovely large open plan living space which includes a kitchen / dining area and lounge to the front. There are two good sized bedrooms. The property enjoys own door access and ample parking in a quiet and mature development.

Ideally located within walking distance of Navan Town Centre which is well suited for all families with a host of amenities and facilities in the Town.

The property has easy access to the M3 motorway leaving Dublin Airport & City Centre within an hours commute. There is also a regular bus service to Dublin City Centre daily.

Accommodation includes Entrance Hall, Kitchen / Lounge area, 2 Bedrooms, an ensuite and Bathroom.

ACCOMODATION

Entrance Hall

With PVC door and wooden flooring.

Kitchen / Lounge

19'0" x 18'8"

Lounge with wooden flooring, feature hardwood fireplace (gas fire) and TV point. Open plan to Kitchen area with wooden flooring, splashback tiling, built in wall and floor units, stainless steel sink unit, oven, hob, extractor fan, washing machine and integrated dishwasher and fridge freezer.

Bedroom 1

13'9" x 10'4"

With carpet, built in wardrobes and patio doors to the rear.

En-Suite

5'8" x 4'9"

With tiled flooring, partly tiled walls, w.c., w.h.b. and shower.

Bedroom 2

13'1" x 8'4"

With carpet flooring and built in wardrobes

Bathroom

7'5" x 6'2"

With tiled flooring, partly tiled walls, w.c., w.h.b and bath with shower.

FIXTURES & FITTINGS

All flooring, curtains, blinds, light fittings, oven, hob, extractor fan, integrated dishwasher, washing machine and fridge freezer are included in the sale.

FEATURES

- Gas fired central heating
- Very well presented throughout
- Small exclusive gated development
- Private communal parking
- Close to Navan Town Centre

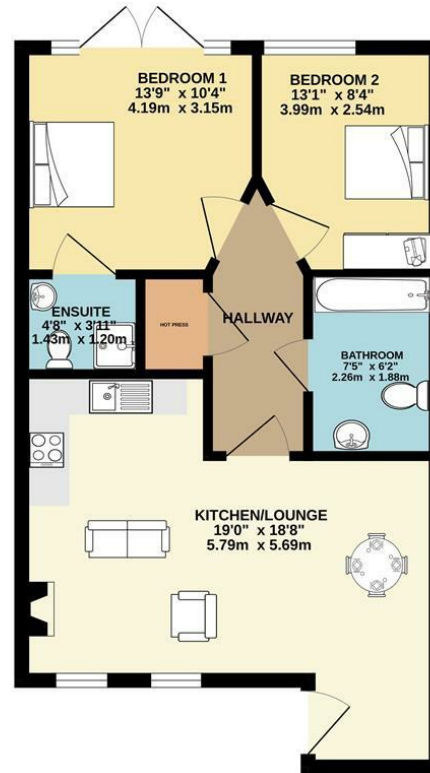
DIRECTIONS

Eircode: C15 NV23



FLOOR PLAN

GROUND FLOOR



TOTAL FLOOR AREA: 753sq. ft. (70.0 sq. m.) approx.

Whilst every attempt has been made to ensure the accuracy of the floorplan contained here, measurements of doors, windows, rooms and any other items are approximate and no responsibility is taken for any error, omission or mis-statement. This plan is for illustrative purposes only and should be used as such by any prospective purchaser. The services, systems and appliances shown have not been tested and no guarantee as to their operability or efficiency can be given.

Made with Metropix ©2024

