





▶ c. 2000 sq ft Retail Unit

An excellent prominent first floor unit at the busy Blackcastle Shopping Centre Navan.. This property comes to the market in great condition and will suit many uses. Well positioned in the town of Navan close to all amenities. Navan is a growing business town which enjoys good facilities and parking. The property is in a good trading position.

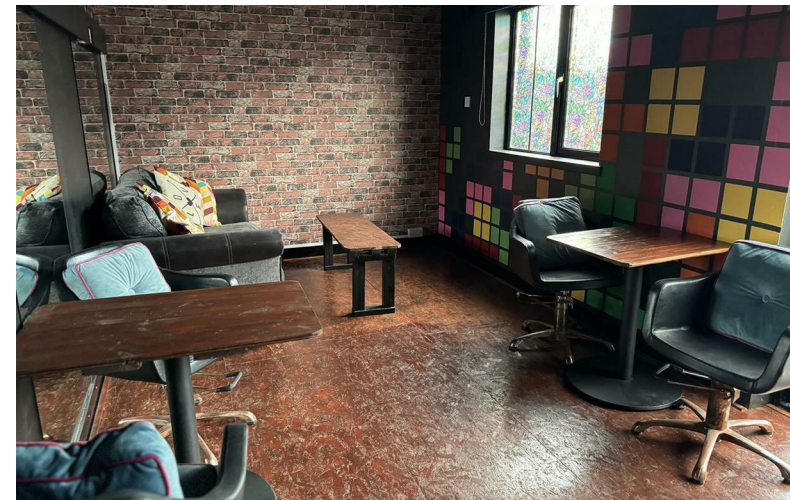
Unit 1A Blackcastle Shopping Centre Navan Co. Meath

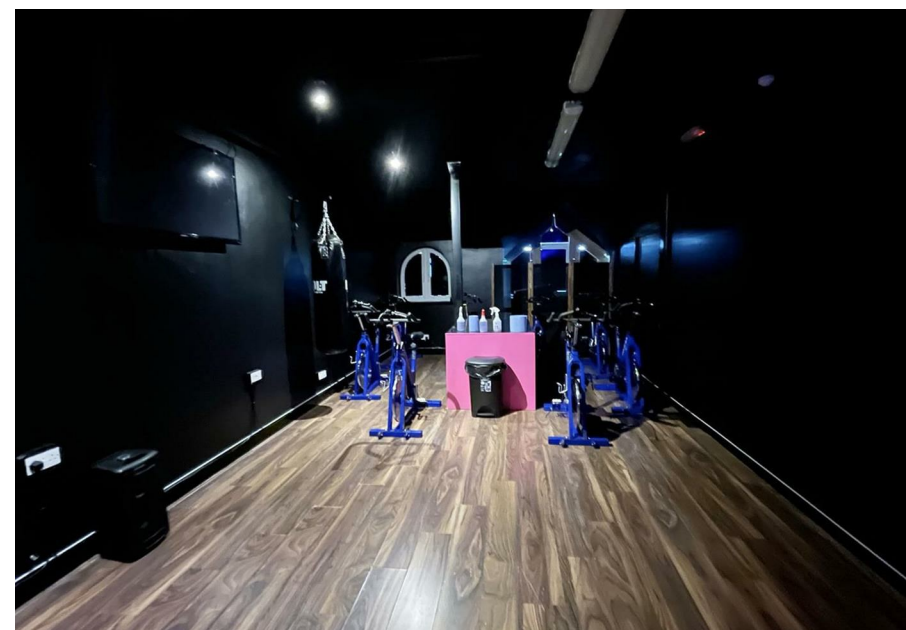
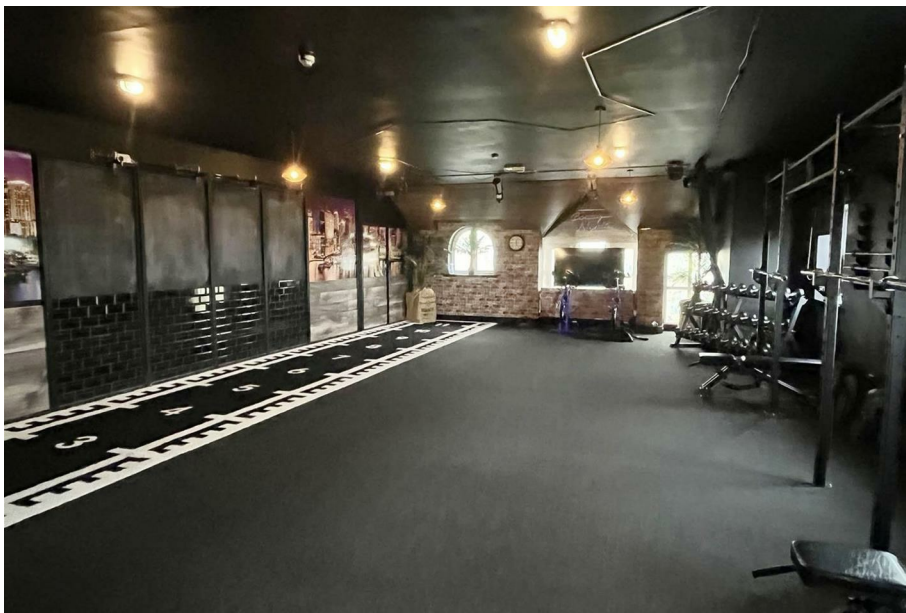
FEATURES

- * Ground Floor Own Door Entrance
- * Suit Many Uses
- * Prominent position
- * Good passing trade and good parking
- * Toilets
- * Flexible lease terms available
- * Ready for occupation

FOR FURTHER DETAILS

Contact Darren Whelan on 046 9027666





0469027666

38 Watergate Street, Navan, Co. Meath, C15 PT8X
raymondpotterton.com

Follow us:

