




Raymond
Potterton

5 The Courtyard Athboy Co. Meath C15 YV97

€129,000








5 The Courtyard is a 1-bedroom ground floor apartment located in the centre of Athboy Town.



5 The Courtyard Athboy Co. Meath C15 YV97

 538.00 sq ft

 1 Bedrooms

 1 Bathrooms

INTRODUCTION

The apartment has an open plan living space including a kitchen/dining room with a lounge and extends to over 50 sq.mts.

Own door access with ample parking in a quiet and mature development.

Ideally located within walking distance of Athboy Town. Athboy Town is well suited for all families with a host of amenities and facilities in the Town including Primary Schools, Secondary Schools, Hotel, Pubs, Restaurants, bus stops, and array of sporting activities.

The property has easy access to the M3 motorway leaving Dublin Airport & City Centre within an hours commute. There is also regular buses to City Centre daily.

Accommodation includes Entrance Hall, Kitchen / Dining / Living area, 1 Bedroom and Bathroom.

ACCOMMODATION

Entrance Hall

4'11" x 3'7"

With wooden flooring.

Kitchen / Lounge / Dining Room

19'4" x 16'0"

Kitchen with wooden flooring, built in wall and floor units, oven, hob, fridge, washing machine. Living / Dining with wooden flooring and open fire with feature fireplace.

Bedroom

13'5" x 11'1"

With carpet and built in wardrobes.

Bathroom

8'6" x 7'2"

With tiles flooring, w.h.b, w.c and bath.

FIXTURES & FITTINGS

All flooring, blinds, light fittings and appliances are included in the sale.

FEATURES

- Move in ready
- Open fire with feature fireplace
- Electric storage heating
- Ample parking
- Management Fees €835
- Previous Rent €400 pm (Set in 2011)
- Walking distance to all local amenities

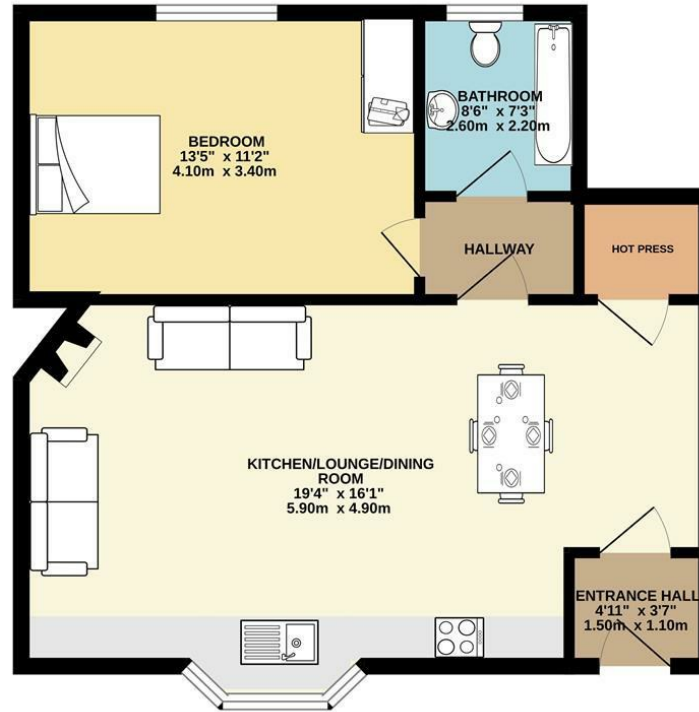
DIRECTIONS

Eircode: C15 YV97



FLOOR PLAN

GROUND FLOOR



TOTAL FLOOR AREA: 538sq.ft. (50.0 sq.m.) approx.

Whilst every attempt has been made to ensure the accuracy of the floorplan contained here, measurements of doors, windows, rooms and any other items are approximate and no responsibility is taken for any error, omission or mis-statement. This plan is for illustrative purposes only and should be used as such by any prospective purchaser. The services, systems and appliances shown have not been tested and no guarantee as to their operability or efficiency can be given.

Made with Metropix ©2023

