








An attractive detached bungalow on a large site of c. 1 Acre close to Nobber Co. Meath just off the R163.



Rahood Nobber Co. Meath A82 YR60

 1150.00 sq ft

 3 Bedrooms

 1 Bathrooms

The property has had the benefit of a large workshop to rear adjoining garage and features excellent spacious living accommodation throughout the house.

Bright spacious living accommodation of c 1150 sq. ft includes Entrance Hall, Lounge, sitting room, Kitchen, 3 Bedrooms, office/multi purpose room and Family Bathroom.

The attic has velux windows and would be easily converted to more rooms.

This property is sure to attract a lot of interest and early viewing is advised.

FEATURES

- Oil fired central heating
- Mature grounds
- On site of c1 acre
- Well Insulated
- Good condition throughout
- Easily accessible location
- Large workshop
- Garage

FIXTURES & FITTINGS

All flooring, appliances & light fittings are included in the sale.

ACCOMMODATION

Entrance Hall

With wooden flooring, pvc front door with glass insert and two side glass inserts.

Lounge

15'8" x 10'7"

With concrete flooring and open fire place

Kitchen

10'9" x 9'8"

With tiled flooring, built in wall to floor units, oven, hob, extractor fan, fridge freezer, stainless steel sink and washing machine.

Bedroom 1

15'10" x 11'7"

With concrete flooring and built in wardrobes.

Office / Dressing Room

10'2" x 7'4"

With concrete flooring

Bedroom 2

9'10" x 7'5"

With concrete flooring and open fireplace

Bedroom 3

14'2" x 10'9"

With wooden flooring

Bathroom

7'1" x 10'9"

With tiled flooring, walk in shower, w.h.b. and w.c.

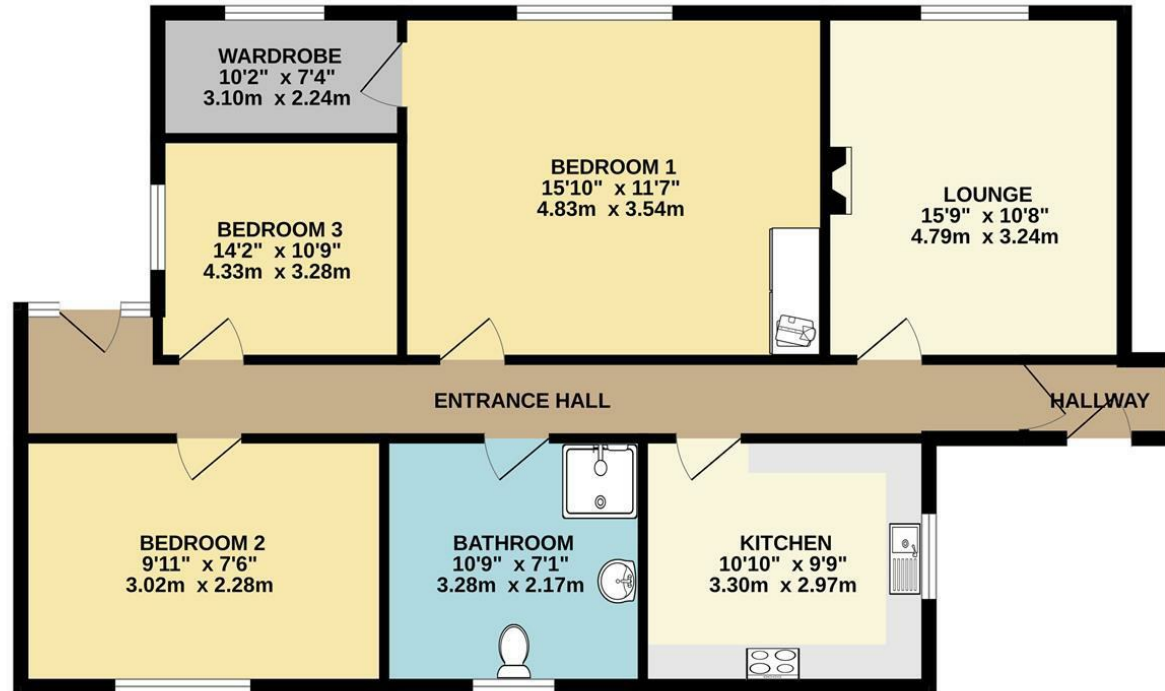
DIRECTIONS

From Navan travel up Flower hill, at "Round O" roundabout, take the second exit for Kingscourt (R162) and travel through Wilkinstown. Before Nobber village turn left and the property is approximately a 1 mile on the left-hand side identified by our for sale sign



FLOOR PLAN

GROUND FLOOR



TOTAL FLOOR AREA : 1087sq.ft. (101.0 sq.m.) approx.

Whilst every attempt has been made to ensure the accuracy of the floorplan contained here, measurements of doors, windows, rooms and any other items are approximate and no responsibility is taken for any error, omission or mis-statement. This plan is for illustrative purposes only and should be used as such by any prospective purchaser. The services, systems and appliances shown have not been tested and no guarantee as to their operability or efficiency can be given.

Made with Metropix ©2023