



11
COIS GLAISIN CLOSE



11 Cois Glaisin Close, Navan, Co. Meath C15 HYE9

€349,950








This is a most impressive 4-bedroom semi-detached residence located in a very central area of Johnstown on the Dublin side of Navan town.



11 Cois Glaisin Close, Navan, Co. Meath C15 HYE9

 1286.00 sq ft

 4 Bedrooms

 3 Bathrooms

INTRODUCTION

This property is located in Cois Glasin a popular residential estate in Navan.

This home benefits from two car parking spaces to the front of the house & access to the large, sunny back garden.

This back garden is beautifully landscaped and benefits from a cobble path.

Internally this property is presented in excellent condition.

It is excellently located within walking distance of St Stephens Primary school, Coláiste na Mí secondary school, Johnstown shopping centre and all the local amenities.

This property is only a 5-minute drive and a 20-minute walk to Navan town centre.

Accommodation includes: Entrance Hall, Lounge, Kitchen, Utility, W.C., 4 Bedrooms, (Master with ensuite) and Bathroom.

FEATURES

- Gas central heating
- Solar panels
- Well presented throughout
- Garden shed
- Side access to the back garden
- PVC double glazed windows
- Front cobblelock driveway
- Two parking spaces





FIXTURES & FITTINGS

All flooring, curtains, blinds, oven, hobs, extractor fan, fridge freezer, dishwasher, washing machine and garden shed are included in the sale.



ACCOMMODATION

Entrance Hall

With wooden flooring, hardwood door with glass insert and coving

Lounge

6.15 x 3.58

With wooden flooring, feature wooden fireplace with gas fire, coving and French double doors to the back garden.

Kitchen/ Dining Room

6.12 x 3.47

With tiled flooring, built in wall & floor units gas hob, stainless steel sink unit, oven, gas hob, extractor fan, integrated fridge freezer and integrated dishwasher.

Utility

1.24 x 1.84

With tiled flooring, washing machine and tumble dryer. W.C. 1.45 x 2.06 With tiled flooring, w.c. and w.h.b.

Landing

With carpet flooring and hotpress.

Bedroom 1

3.3 x 3.9

With carpet and built-in wardrobes.

Ensuite

2.91 x 1.21

With tiled flooring, partially tiled walls w.h.b., w.c. and power shower.

Bedroom 2

3.3 x 3.69

With carpet and built-in wardrobes.

Bedroom 3

3.7 x 2.89

With carpet

Bedroom 4

2.74 x 3.82

With carpet

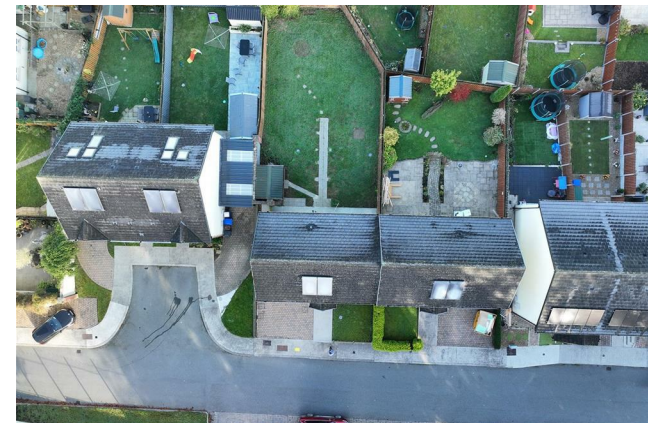
Bathroom

1.89 x 1.68

With tiled flooring, bath, w.c., and w.h.b.

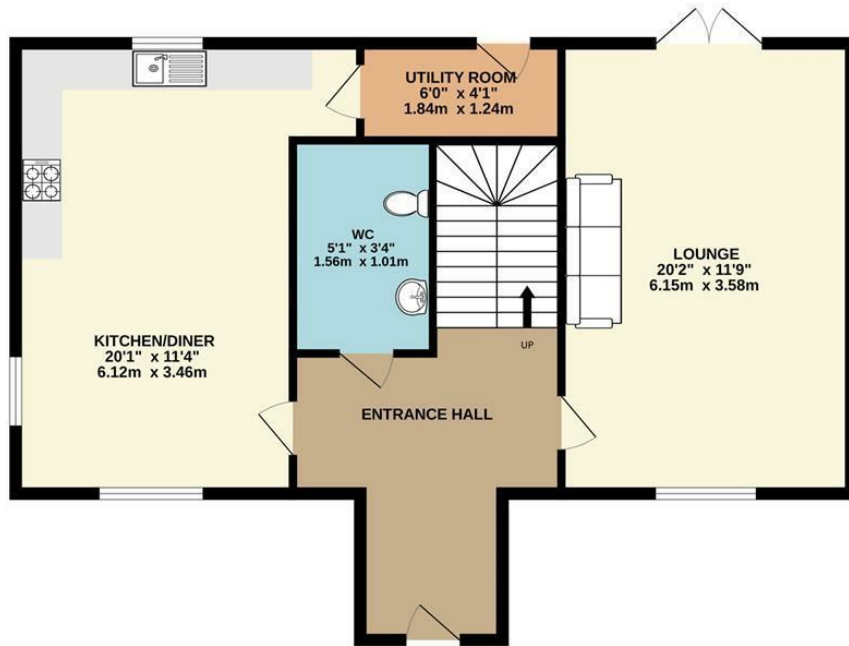
EIRCODE

C15 HYE9

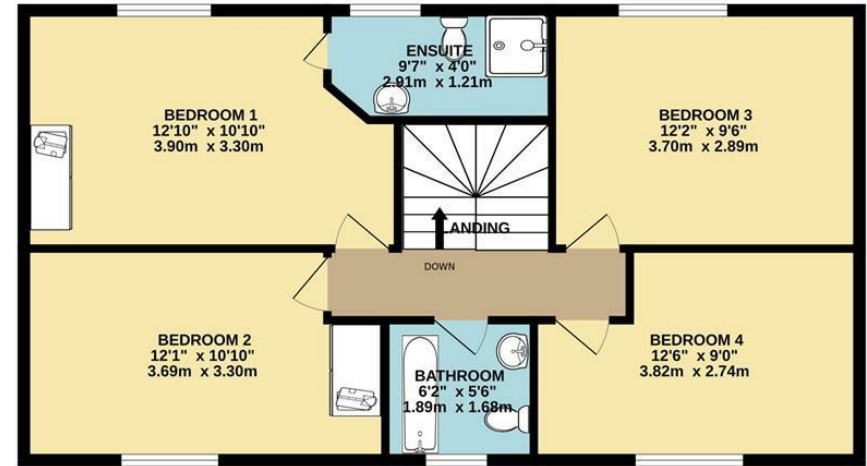


FLOOR PLAN

GROUND FLOOR



1ST FLOOR



TOTAL FLOOR AREA : 1281sq.ft. (119.0 sq.m.) approx.

Whilst every attempt has been made to ensure the accuracy of the floorplan contained here, measurements of doors, windows, rooms and any other items are approximate and no responsibility is taken for any error, omission or mis-statement. This plan is for illustrative purposes only and should be used as such by any prospective purchaser. The services, systems and appliances shown have not been tested and no guarantee as to their operability or efficiency can be given.

Made with Metropix ©2023