








2 The Steeples is an excellent 2 bedroom apartment extending to c. 66 sq.m. ideally located in Navan Town Centre. Located to the front of the development No 2 benefits from its own external access from Timmons Hill making this an ideal property for owner occupiers and investors.

The entire property has recently been refurbished and benefits from full painting, a newly fitted kitchen with modern appliances, new bathroom, ensuite and flooring, upgraded electric radiators and LED lighting upgrades.

## 2 The Steeples Navan Co. Meath C15 NP76

 710.00 sq ft

 2 Bedrooms

 2 Bathrooms

### INTRODUCTION

The Steeples is a popular residential development in the centre of the Town. It is walking distance to all the amenities in Navan Town.

Accommodation includes Entrance Hall, Kitchen / Dining Room, Lounge, 2 Bedrooms (Main Ensuite) and Bathroom.

### ACCOMMODATION

#### Entrance Hall

11'1" x 6'7"

With vinyl flooring and hardwood front door.

#### Lounge

14'1" x 9'0"

With carpet. Double doors to balcony.

#### Kitchen / Dining Room

14'1" x 9'0"

With tiled flooring, newly fitted built in wall and floor units with bright worktop, oven, hob, extractor fan, fridge freezer, washing machine and modern splash back tiling.

#### Bedroom 1

10'9" x 10'3"

With carpet and built in wardrobes.

#### Ensuite

7'7" x 5'4"

With tiled flooring and wet area, w.c, w.h.b and shower.

#### Bedroom 2

12'10" x 9'4"

With carpet and built in wardrobes.

#### Bathroom

7'2" x 6'1"

With tiled flooring and wet area, w.c, w.h.b and bath.

### FIXTURES & FITTINGS

Sold as seen.

### FEATURES

- Spacious two bedroom apartment
- Completely refurbished
- New kitchen, bathroom and ensuite
- New electric storage heaters
- Secure designated parking with electric gates
- Town centre location
- Large balcony

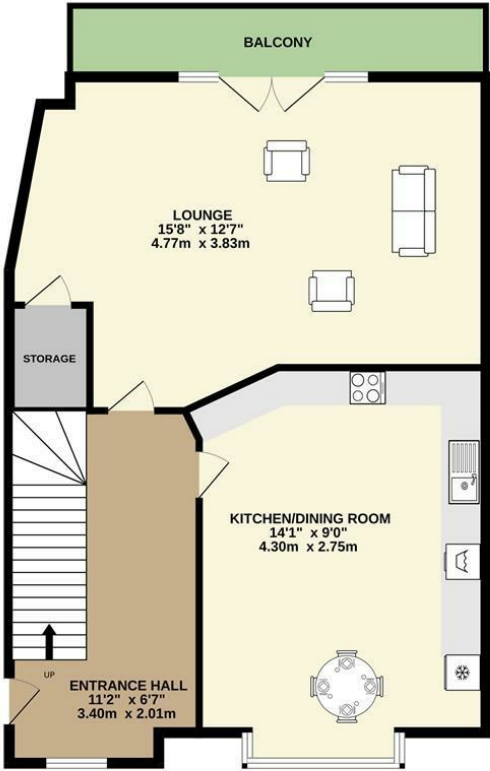
### DIRECTIONS

C15 NP76

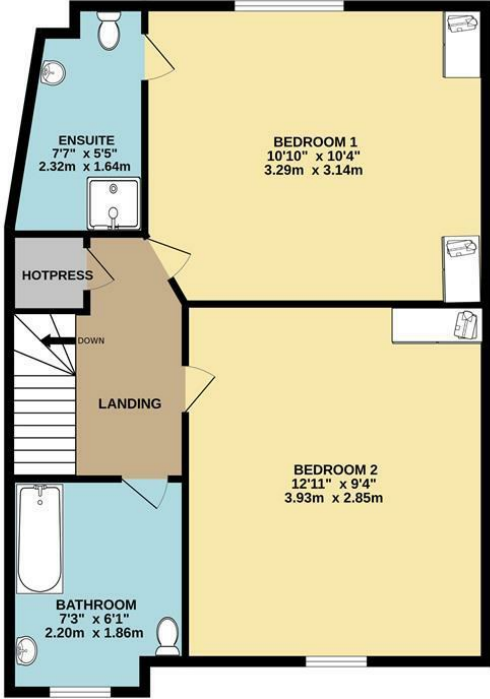


FLOOR PLAN

GROUND FLOOR



1ST FLOOR



TOTAL FLOOR AREA : 710sq.ft. (66.0 sq.m.) approx.  
Whilst every attempt has been made to ensure the accuracy of the floorplan contained here, measurements of doors, windows, rooms and any other items are approximate and no responsibility is taken for any error, omission or mis-statement. This plan is for illustrative purposes only and should be used as such by any prospective purchaser. The services, systems and appliances shown have not been tested and no guarantee as to their operability or efficiency can be given.  
Made with Metropix ©2023