








A quaint 2 bedroom plus study stone cottage which has been cleverly extended to the rear and accommodates a lovely modern open plan kitchen. The property extends c. 58 sq.m. and sits on a mature site of c. 0.5 acres.

Retaine, Robinstown, Navan Co. Meath C15 YA70

 624.00 sq ft

 2 Bedrooms

 1 Bathrooms

INTRODUCTION

Retaine Robinstown is a lovely property located in a gorgeous country setting on the outskirts of Robinstown Village. It is within close proximity to Navan and Trim.

The cottage has many features included high vaulted ceilings, and exposed stone work and accommodates 2 bedrooms and a cosy lounge.

The extension to the rear offers a lovely bright open plan kitchen and an ideal office room for remote working.

This cottage has been enhanced with a bright red door and double glazed windows and patio doors.

It is set on c 0.5 acres of seeded garden which is all to the rear of the property, as well as a patio area to the side of the house. There is a steel shed to the rear boundary.

Well located just outside Robinstown Village and is only 8 kms Navan & Trim Towns, The property has good access to the M3.

Accommodation Entrance Hall, Kitchen, Lounge, Study, 2 Bedrooms and Shower Room.

FEATURES

- Quaint country cottage on c 0.5 acres
- Well presented throughout
- Lovely countryside location
- Double glazed windows
- Oil heating.
- Patio area to the side
- Stone driveway
- Septic tank
- Private well & water treatment





FIXTURES & FITTINGS

All flooring, light fittings, oven, hob, extractor fan, microwave, fridge freezer, dishwasher and washing machine are included in the sale.

ACCOMMODATION

Entrance Porch

With tiled flooring and hardwood door with side glass panels.

Lounge

4.44 x 3.26

With wooden flooring, exposed feature stone wall, vaulted tongue and groove ceiling, wooden fireplace with open fire.

Kitchen

3.95 x 3.73

With tiled flooring, modern cream built in wall to floor units, stainless steel sink, oven, hob, extractor fan, integrated microwave, integrated fridge freezer, integrated dishwasher and washing machine.

Study

1.95 x 1.84

With wooden flooring

Bedroom 1

3.10 x 3.22

With exposed feature stone wall, wooden flooring and built-in wardrobes.

Bedroom 2

2.03 x 3.13

With exposed feature stone wall, wooden flooring and built-in wardrobes

Bathroom

1.44 x 1.95

With tiled flooring, partially tiled walls, shower, w.c. and w.h.b.

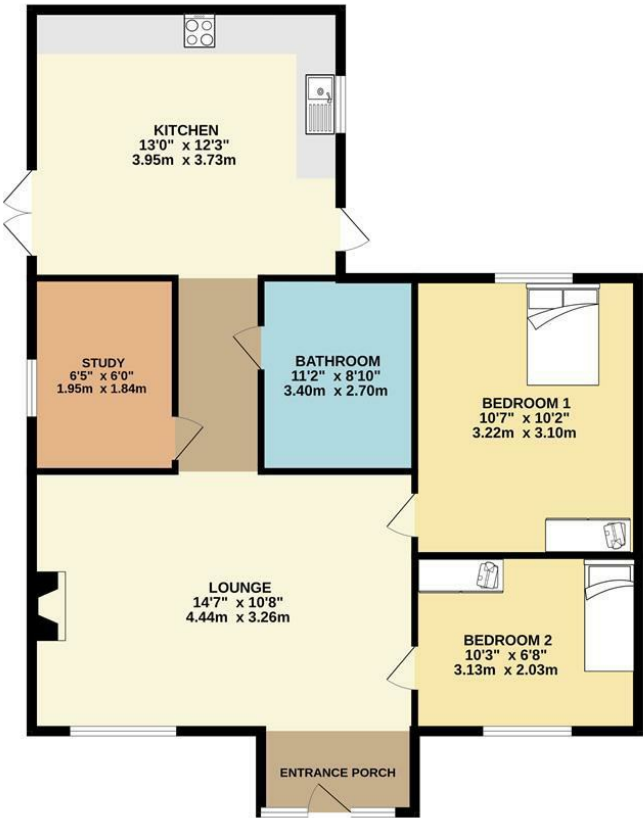
EIRCODE

C15 YA70



FLOOR PLAN

GROUND FLOOR



TOTAL FLOOR AREA: 624sq ft (58.0 sq.m.) approx.
Whilst every attempt has been made to ensure the accuracy of the floorplan contained here, measurements of doors, windows, rooms and any other items are approximate and no responsibility is taken for any error, omission or misstatement. This plan is for illustrative purposes only and should be used as such by any prospective purchaser. The services, systems and appliances shown have not been tested and no guarantee as to their operability or efficiency can be given.
Made with Metropix ©2023