








This property is a 5 bedroom detached house in a sought after development Millbrook on the Dublin side of Navan Town walking distance to all local amenities.

167 Millbrook, Johnstown, Navan Co. Meath C15 XH5C

 2110.00 sq ft

 5 Bedrooms

 3 Bathrooms

INTRODUCTION

This property is presented in excellent condition and benefits from lovely large living and bedroom accommodation.

It has a large front driveway with mature hedging providing ample parking.

The back garden with has a south facing aspect has a host of mature plantation and benefits from a decked area and wooden shed.

Millbrook is a mature estate with lots of landscaping and green area. 167 overlooks a spacious green to the front.

This property is situated in a prime location beside the Dublin Road minutes from Junction 8 on the M3 and also accessible to the N2 route to Dublin City & Airport.

FEATURES

- 5 Bedroom detached house on elevated site
- Presented in great condition throughout
- Prime residential location
- South facing back garden
- Mature hedging and landscaping
- Garden shed





FIXTURES & FITTINGS

All flooring, light fittings, oven, hob and garden shed are included in the sale.



ACCOMMODATION

Entrance Hall

With tiled flooring.

Lounge

With carpet, feature marble fireplace with open fire and double doors to Dining Room.

Kitchen

With tiled flooring and splash back tiling, built in wall and floor units, stainless steel sink unit, oven, hob, extractor fan, dishwasher and fridge freezer.

Diningroom

With wooden flooring

Utility

With tiled flooring, wall and floor units.

Reception Room

With wooden flooring

Guest w.c.

With tiled flooring, w.h.b and w.c.

Landing

With carpet and hotpress.

Bedroom 1

With carpet and a walk in wardrobe.

En-Suite

With w.c, w.h.b, shower and a dual vanity sink.

Bedroom 2

With carpet and built in wardrobes.

En-Suite

With tiled walls and tiled flooring, w.c, w.h.b and shower.

Bedroom 3

With wooden flooring and built in wardrobes.

Bathroom

With tiled floors, w.h.b, with vanity unit, w.c, shower and heated towel rack.

Landing

With carpet.

Bedroom 4

With carpet, built in storage and double velux windows.

Bedroom 5

With wooden floors and double velux windows.

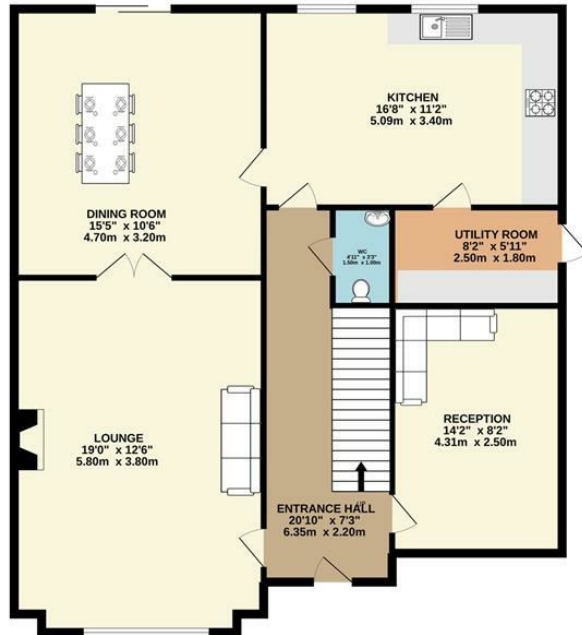
DIRECTIONS

C15 XH5C

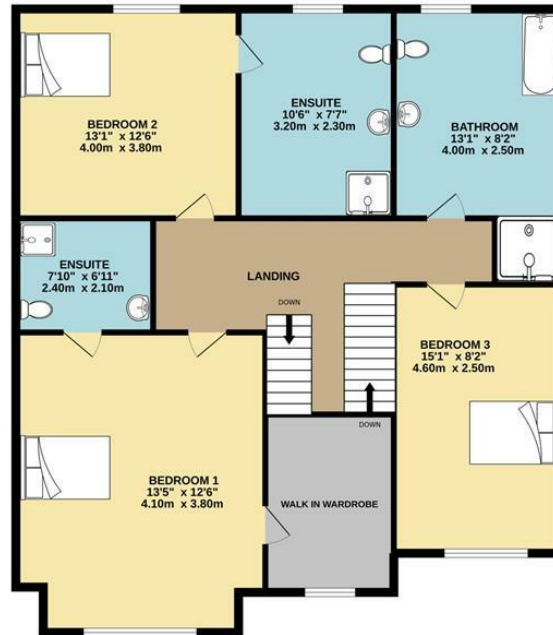


FLOOR PLAN

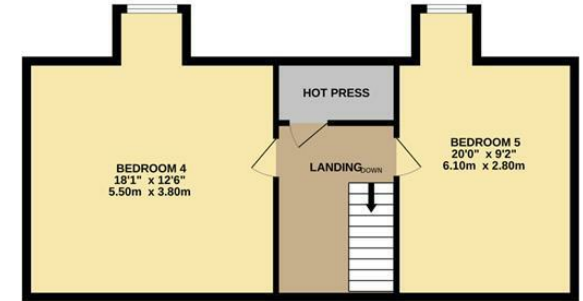
GROUND FLOOR



1ST FLOOR



2ND FLOOR



TOTAL FLOOR AREA : 2110sq.ft. (196.0 sq.m.) approx.

Whilst every attempt has been made to ensure the accuracy of the floorplan contained here, measurements of doors, windows, rooms and any other items are approximate and no responsibility is taken for any error, omission or mis-statement. This plan is for illustrative purposes only and should be used as such by any prospective purchaser. The services, systems and appliances shown have not been tested and no guarantee as to their operability or efficiency can be given.
Made with Metropix ©2022