




Raymond
Potterton

56 Ros Na Ri Navan Co. Meath C15 Y1K0

€270,000


BER C3





A newly renovated 3 bedroom end of terrace residence extending to 100 sq.m. on a large site located in a mature residential development Ros na Ri on the outskirts of Navan Town. The property is presented in excellent condition



56 Ros Na Ri Navan Co. Meath C15 Y1K0

 1076.00 sq ft

 3 Bedrooms

 2 Bathrooms

INTRODUCTION

This house benefits from newly fitted kitchen, new gas boiler, painted throughout, new flooring and extra large garden.

The accommodation is extremely spacious throughout and includes Entrance Hall, Lounge, Kitchen/Dining, Guest w.c., 3 Bedrooms and Shower Room.

The property is within walking distance of all amenities in Navan Town and locally Beechmount Shopping Centre, schools, sporting facilities are within easy reach. The property has excellent access to the M3 which is approximately 3 km away.

ACCOMMODATION

Entrance Hall

With tiled flooring

Kitchen / Dining

With tiled flooring, splash back tiling, newly fitted wall and floor units, stainless steel sink unit, oven, microwave, hob, extractor fan and washing machine. Open plan to Dining area with tiled flooring, sliding doors to the rear and door to side garden.

Lounge

With carpet, wooden fireplace with open fire and double doors to the Kitchen / Dining.

W.C.

With tiled flooring, w.c. and w.h.b

Landing

With carpet

Bedroom 1

With carpet.

Bedroom 2

With carpet.

Bedroom 3

With carpet.

Shower Room

With tiled flooring, tiled walls, w.h.b, w.c. and shower.

FIXTURES & FITTINGS

All flooring, blinds, light fittings, oven, hob, microwave, extractor fan and washing machine are included in the sale.

FEATURES

- Recently fully painted throughout
- Newly renovated kitchen and bathroom
- Top quality flooring
- Large back garden
- Cobblelock patio area
- Open fire
- Gas Heating (New gas boiler)
- Gated side access

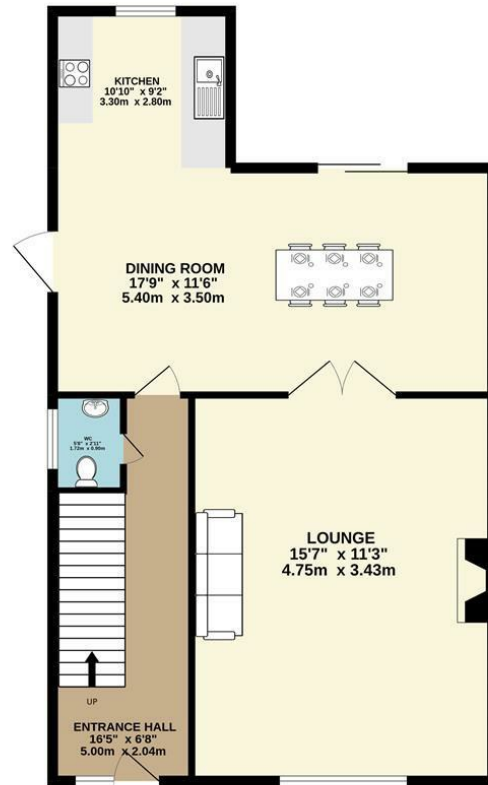
EIRCODE

C15 Y1K0

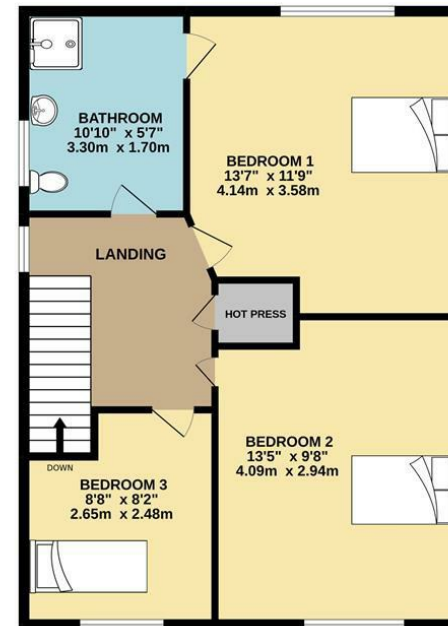


FLOOR PLAN

GROUND FLOOR



1ST FLOOR



TOTAL FLOOR AREA : 1076sq.ft. (100.0 sq.m.) approx.

Whilst every attempt has been made to ensure the accuracy of the floorplan contained here, measurements of doors, windows, rooms and any other items are approximate and no responsibility is taken for any error, omission or mis-statement. This plan is for illustrative purposes only and should be used as such by any prospective purchaser. The services, systems and appliances shown have not been tested and no guarantee as to their operability or efficiency can be given.
Made with Metropix ©2022