




Raymond
Potterton

33 Poolboy Quay Navan Co. Meath C15 W732

€135,000

BER C1





An impressive 1 bedroom apartment extending to c. 46.25sq.m. The property is located in the popular development Poolboy Quay which is located in Navan Town Centre. Located on the 2nd floor with private balcony overlooking the River Boyne.


Accommodation includes Entrance Hall, Kitchen / Dining, 1 Bedroom and Bathroom.



33 Poolboy Quay Navan Co. Meath C15 W732

 498.00 sq ft

 1 Bedrooms

 1 Bathrooms

ACCOMMODATION

Entrance Hall

16'4" x 7'4"

With wooden floor and hotpress.

Kitchen / Lounge

16'7" x 12'5"

Kitchen with tiled floor, partly tiled walls, built in wall and floor units, oven, hob, extractor fan, fridge, dishwasher and washing machine.

Open plan to Lounge with wooden flooring and patio doors to the balcony.

Bedroom 1

12'7" x 9'6"

With wooden flooring and built in wardrobes.

Bathroom

8'6" x 5'3"

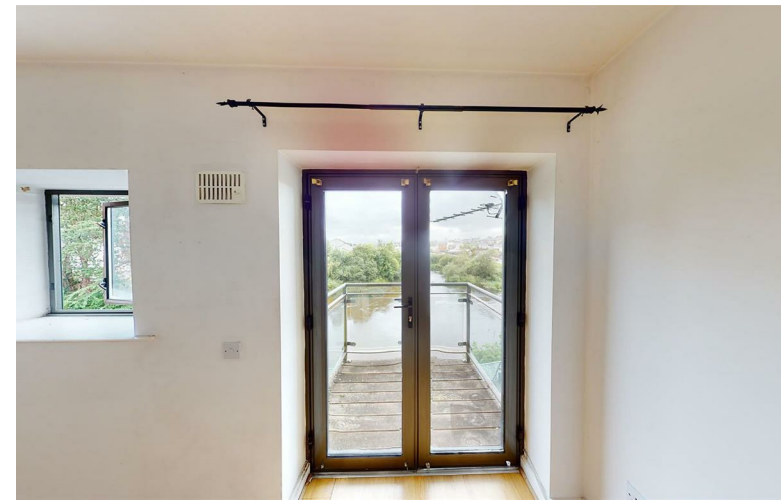
With tiled flooring, partly tiled walls, w.c., w.h.b and bath.

FEATURES

- Secure gated development
- Lift
- Private balcony
- Overlooking River Boyne
- Electric storage heating

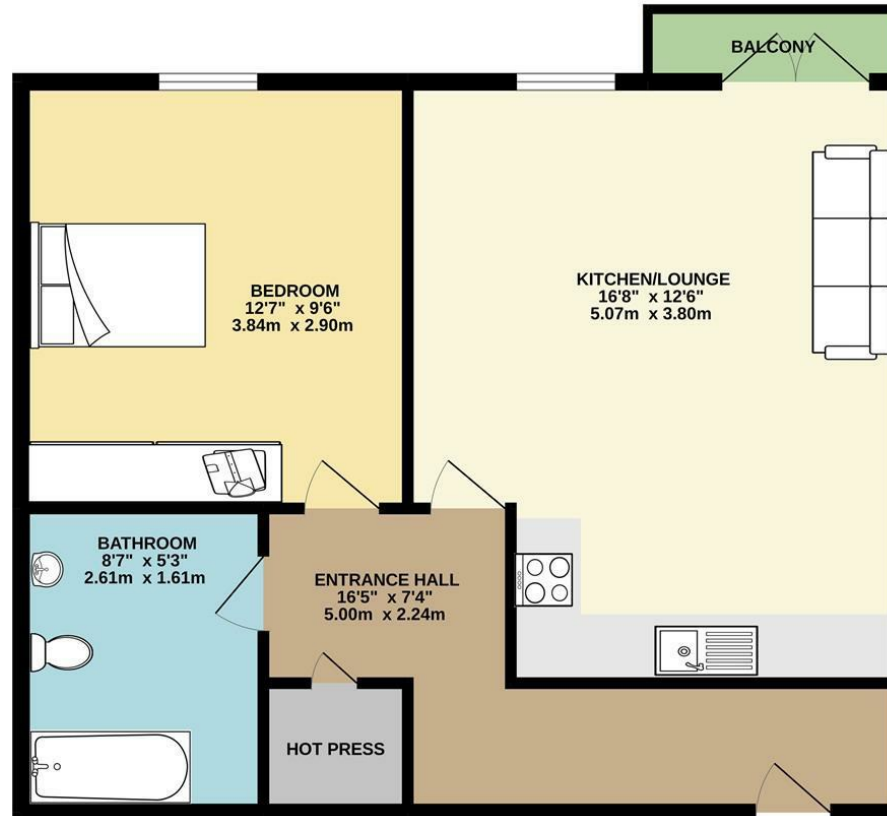
DIRECTIONS

From Dublin travel out the M3. Exit at Junction 8 for Navan Town. Travel towards Navan and at the 4th set of traffic lights turn right up Flower Hill and Poolboy Quay is located immediately on the right hand side after the bridge.



FLOOR PLAN

GROUND FLOOR



TOTAL FLOOR AREA : 498sq.ft (46.3 sq.m.) approx.

Whilst every attempt has been made to ensure the accuracy of the floorplan contained here, measurements of doors, windows, rooms and any other items are approximate and no responsibility is taken for any error, omission or mis-statement. This plan is for illustrative purposes only and should be used as such by any prospective purchaser. The services, systems and appliances shown have not been tested and no guarantee as to their operability or efficiency can be given.
Made with Metropix ©2022