







New to the market this extremely spacious 4 bedroom semi-detached family home. The property is in excellent condition and would make an ideal home for first time buyers and investors alike.

27 Priory Grove Navan Co. Meath C15 T2FW

 1292.00 sq ft

 4 Bedrooms

 3 Bathrooms

INTRODUCTION

This bright and spacious home south facing home is excellently located in a great residential area within walking distance to Johnstown Shopping Centre and Primary & Secondary Schools.

Accommodation includes Entrance Hall, Lounge, Kitchen / Dining Room, Guest W.C., 4 Bedrooms (Master Bedroom Ensuite) and Family Bathroom.

FIXTURES & FITTINGS

All flooring, blinds, light fittings, oven, hob, extractor fan, dishwasher, fridge freezer, and garden shed are included in the sale.

FEATURES

- Gas fired central heating
- South facing garden
- Feature golden tarmac driveway
- Side entrance
- Garden Shed
- PVC double glazed windows
- PVC fascia and soffit
- Off street parking
- 25 Minutes to M50
- Private landscaped rear garden with nice decking area





DIRECTIONS

From Dublin take the M3 Motorway to Navan and exit at Junction 8 (Navan South). Continue to the roundabout and take the 2nd exit off. Travel to traffic lights and turn left (Metges Road). Continue straight passing Navan IDA Business Park and take the 2nd turn right into Priory. In the development continue straight and veer left and take 2nd turn right and No. 27 is on the right hand side identified by our For Sale Sign.

ACCOMMODATION

Entrance Hall

With hardwood front door with glass inserts and double door with glass inserts to lounge.

Lounge

With wooden flooring, bay window, T.V. point, feature wooden fireplace and double opening tot Kitchen / Dining Room.

Kitchen / Dining Room

Kitchen with tiled flooring, partly tiled walls, built in walls and floor units, stainless steel sink unit, oven, hob, extractor fan, dishwasher. Open plan to Dining Area (4.06m x 3.20m) with double doors to Lounge

Utility

With tiled flooring, plumbed for washing machine, access to the side.

Guest w.c.

With tiled flooring, w.c. and w.h.b.

Landing

With carpet and hotpress.

Bedroom 1

With carpet, wardrobes and T.V. point.

Ensuite

With tiled flooring & walls, shower, w.c. and w.h.b.

Bedroom 2

With carpet and built in wardrobes.

Bedroom 3

With carpet and built in wardrobes.

Bedroom 4

With carpet and built in wardrobes.

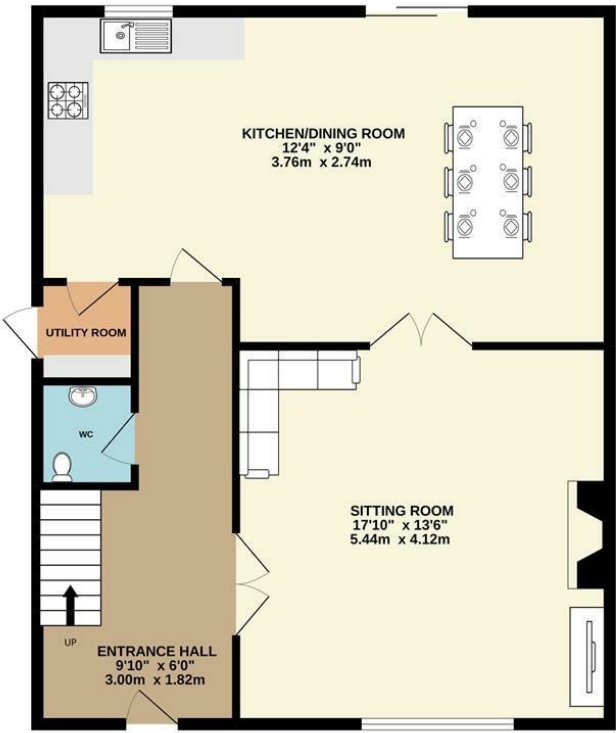
Bathroom

With fully tiled flooring & walls, w.c., w.h.b and bath.

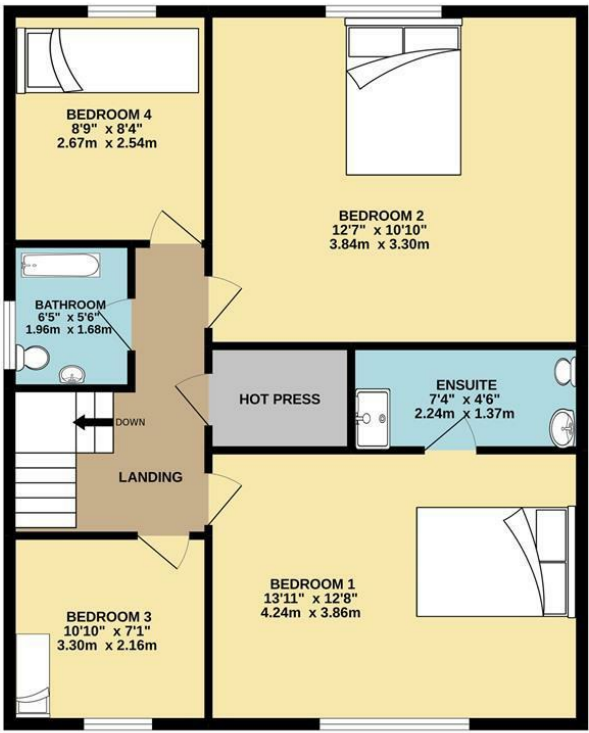


FLOOR PLAN

GROUND FLOOR



1ST FLOOR



TOTAL FLOOR AREA : 1292sq.ft. (120.0 sq.m.) approx.

Whilst every attempt has been made to ensure the accuracy of the floorplan contained here, measurements of doors, windows, rooms and any other items are approximate and no responsibility is taken for any error, omission or mis-statement. This plan is for illustrative purposes only and should be used as such by any prospective purchaser. The services, systems and appliances shown have not been tested and no guarantee as to their operability or efficiency can be given.
Made with Metropix ©2022