








An outstanding large 4 bedroom semi-detached residence on a corner site set in Beaufort Place.

Beaufort place is a much sought after and mature residential development close to Navan Town centre.

16 The Cedars, Beaufort Place, Navan, Co. Meath C15

 1601.00 sq ft

 4 Bedrooms

 3 Bathrooms

INTRODUCTION

This large family home also boasts an attractive façade with a walled in driveway and beautiful garden to rear with large storage shed.

The location of the property is second to none and is within walking distance to schools, shops, restaurants, golf courses heritage sites, river walks and a whole host of other local amenities. The property benefits from and boasts of bright and spacious living accommodation throughout the entire property.

Convenient location close to Dublin with excellent road and bus links to the city centre.

This property coupled with superb living accommodation combine to create this impressive family home.

This excellent property is sure to attract a lot of early interest and viewing is highly recommended to appreciate the sheer quality behind the door of number 16.

Accommodation includes Entrance Hall, Lounge, Kitchen/ Dining Room, Utility room, Guest w.c., 4 Bedrooms (Master Ensuite), Study, Laundry room and Family Bathroom.

FEATURES

- Stunning Property
- Landscaped front and rear garden
- Large shed to rear
- Cobblelock driveway
- Peaceful location
- Within easy reach of Dublin
- Bright & spacious living accommodation throughout





FIXTURES & FITTINGS

All flooring, oven, hob, extractor fan, fridge freezer and wardrobes are included in the sale.

ACCOMMODATION

Entrance Hall

With tiled floors.

Lounge

With wooden floors and an open fire.

Study / Reception

With laminate floors and built in storage.

Kitchen / Dining Room

With tiled floors, built in storage, wall and floor units, hob, oven and dishwasher.

Utility Room

With tiled floors and built in storage.

Guest w.c.

Tiled flooring, w.c. and w.h.b.

Landing

With carpet.

Master Bedroom

With wooden floors and built in wardrobes.

Ensuite

With w.c., w.h.b. and shower.

Bedroom 2

With wooden floors and built in wardrobes.

Bedroom 3

With wooden floors built in wardrobes.

Bedroom 4

With wooden floors built in wardrobes.

Bathroom

With tiled floors and walls, w.c., w.h.b. and bath.

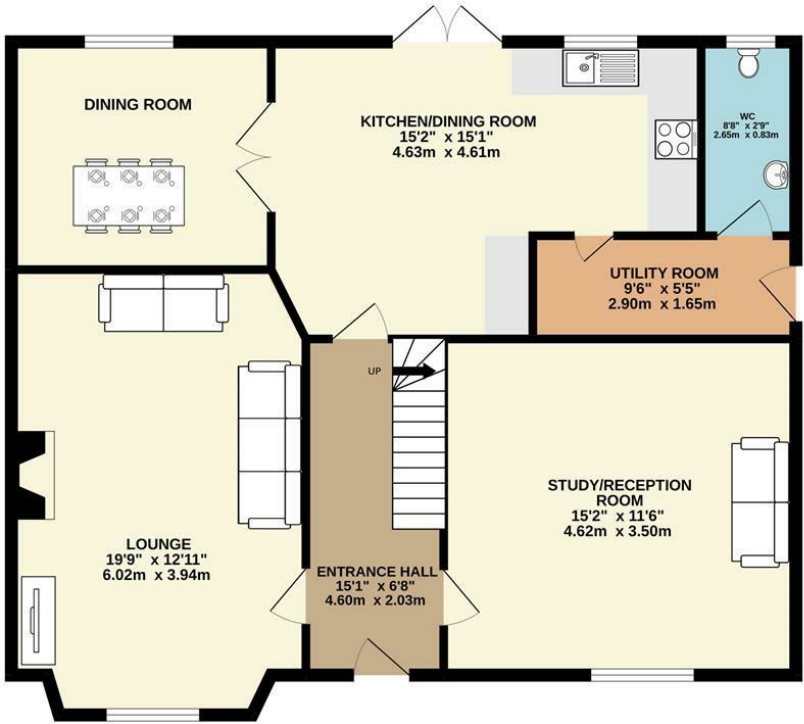
DIRECTIONS

From Dublin travel into Navan along the M3. Exit at Junction 8. At the 4th set of traffic lights turn right up Flowerhill. Continue to the roundabout and go straight out the Kingscourt Rd. Take the left before the Circle K Station into Beaufort Place. Take the first turn left continue around the corner and take the second left into The Cedars Number 16 is located on the right hand side.

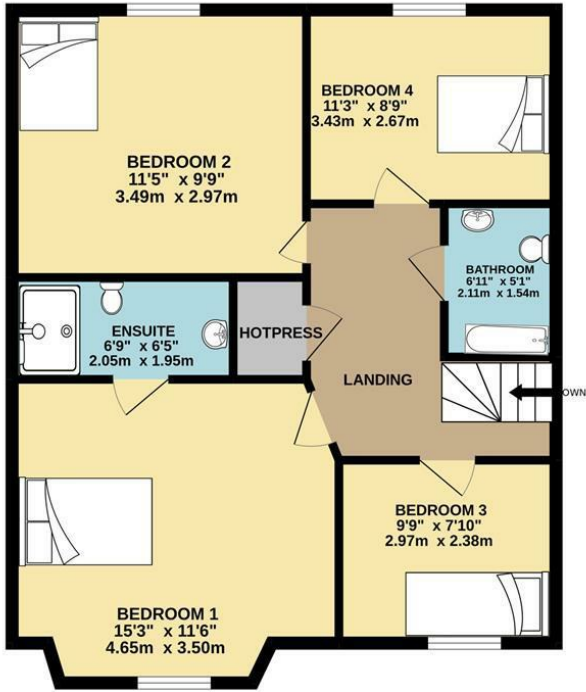


FLOOR PLAN

GROUND FLOOR



1ST FLOOR



TOTAL FLOOR AREA : 1601sq.ft. (148.7 sq.m.) approx.
Whilst every attempt has been made to ensure the accuracy of the floorplan contained here, measurements of doors, windows, rooms and any other items are approximate and no responsibility is taken for any error, omission or mis-statement. This plan is for illustrative purposes only and should be used as such by any prospective purchaser. The services, systems and appliances shown have not been tested and no guarantee as to their operability or efficiency can be given.
Made with Metropix ©2022