








A stunning country residence extending to c. on c. 1.12 acre surrounded by beautifully landscaped and perfectly maintained private grounds.

Very attractively located in pleasant countryside location and yet located just off the Navan/Trim just 6 km from Navan, 8.5 km to Trim and 5 km to Junction 8 of the M3 Motorway. The property is easily accessible to Dublin and journey times to the M50 is c. 25 minutes.

Gillstown, Macetown, Navan Co. Meath C15 A3K1

 2200.00 sq ft

 4 Bedrooms

 3 Bathrooms

This magnificent property extending to 2800 sq.ft is in excellent condition with top quality fixtures and fittings throughout.

This family home has been constructed with the best quality building materials and features high levels of insulation and all modern services were installed.

On entering the home, it is evident how much space & light the property provides with the amount of windows in the home.

Accommodation briefly consists of a feature entrance hall, reception room, living room, a stunning kitchen/ dining room, a large utility room, guest w.c, storage rooms, office, four extra large bedrooms (two with ensuite), and a spacious family bathroom.

The property boasts of stunning views to all aspects of the site.

The grounds are beautifully landscaped with a sweeping pebble driveway enhanced by patio, lawns, mature trees providing all year-round colour and interest and feature stone entrance with electric gates.

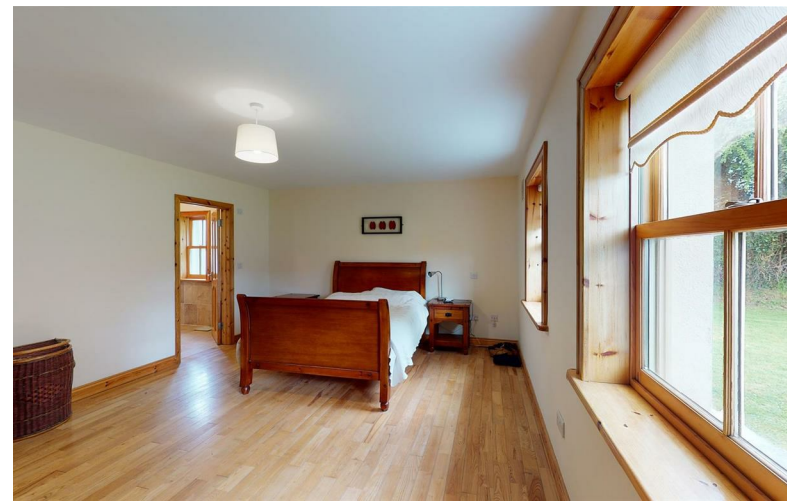
The property also boasts a large workshop with roller door and multi use mezzanine above with wc.

FEATURES

- Stunning property
- Mature private site
- Insulated to a high standard with top quality glazing throughout
- Outside matching stone piers enhanced by electric gates
- Patio area
- Spacious family home
- Large workshop
- Turnkey condition
- Great location

FIXTURES & FITTINGS

The sale includes all flooring, solid fuel stove and kitchen appliances except the washing machine.





DIRECTIONS

Eircode C15A3K1

From Navan travel on the trim road for 6km and take the right hand turn before the filling station the property is located c1 km on the left hand side

ACCOMMODATION

Entrance Hall

With feature stair case and tiled flooring.

Livingroom

With feature stove with brick surround and tiled floor.

Kitchen

With high vaulted ceilings and fully fitted solid kitchen. French doors to patio.

Utility

With built in wall and floor units.

Bedroom 2

With wooden flooring.

En-Suite

With w.c., w.h.b. shower and tiled flooring.

Lounge

With wooden flooring.

Office

With tiled floor.

Guest w.c.

With w.c., w.h.b. and tiled floor.

Landing

With wooden floor.

Master Bedroom

With 2 walk in wardrobes and wooden flooring.

En-Suite

With w.c., w.h.b., shower, fully tiled.

Bathroom

With w.c., w.h.b., bath, shower and fully tiled.

Bedroom 3

With built in storage and wooden flooring.

Bedroom 4

With built in wardrobe and wooden flooring.

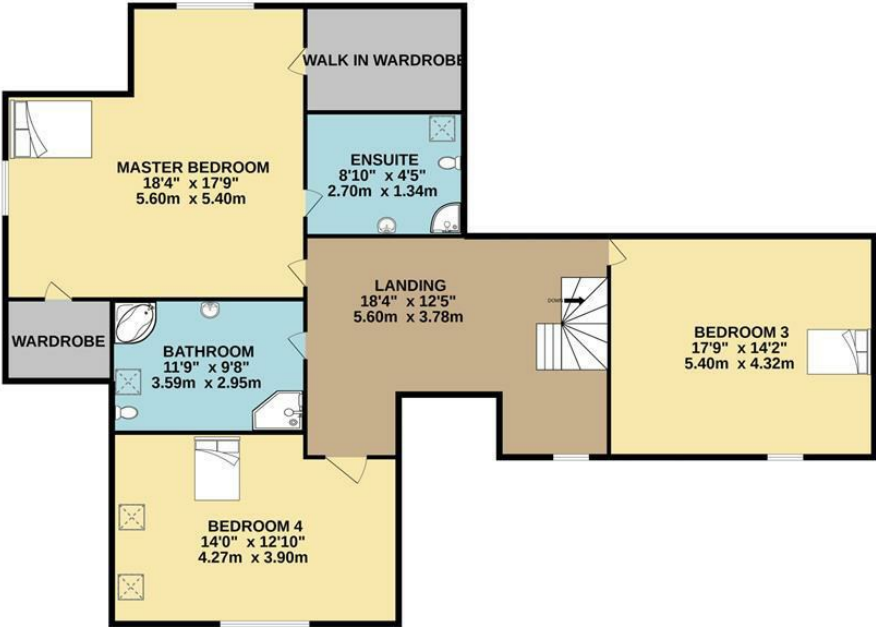


FLOOR PLAN

GROUND FLOOR



1ST FLOOR



TOTAL FLOOR AREA : 2800sq.ft. (260.1 sq.m.) approx.
Whilst every attempt has been made to ensure the accuracy of the floorplan contained here, measurements of doors, windows, rooms and any other items are approximate and no responsibility is taken for any error, omission or mis-statement. This plan is for illustrative purposes only and should be used as such by any prospective purchaser. The services, systems and appliances shown have not been tested and no guarantee as to their operability or efficiency can be given.
Made with Metropix ©2022