








A superb residence on c.0.6-acre site situated in the highly desirable Tatestown Townland.

The location of the property is second to none within ten minutes to Navan Town Centre but with the peace and charm of countryside living.

Tatestown Navan Co. Meath C15E9W2

 1750.00 sq ft

 4 Bedrooms

 2 Bathrooms

INTRODUCTION

This wonderful property is surrounded by impeccably landscaped gardens and is maintained to an exceptional standard.

This family home has been constructed to a very high standard and boasts of bright and spacious accommodation throughout.

The property boasts of peaceful surroundings hidden away from the road and not overlooked from the rear.

This magnificent residence is sure to generate a lot of interest due to its location close to Navan & Kells with easy access on to the M3 motorway c.7-minute drive.

The wonderful family home is also close by to excellent amenities including, Schools, sports clubs &, local shops.

Accommodation briefly consists of an entrance hall, large bright reception room, fully fitted kitchen, dining room utility room, four bedrooms master ensuite and walk in wardrobe,

FIXTURES & FITTINGS

All flooring, blinds and light fittings are included in the sale.

FEATURES

- Mature Private Site
- Excellent location
- Stunning property
- Spacious living accommodation
- Stunning gardens with manicured lawns & hedgerow

OUTSIDE

- New garden shed





ACCOMMODATION

Entrance Hall

With wooden flooring.

Lounge

With feature fireplace and wooden flooring.

Dining Room

With wooden flooring. French doors to rear. Open plan to Kitchen

Kitchen

With fitted wall and floor units, tiled flooring, dishwasher and 7 ring stove, oven, American fridge freezer and center Island. French doors to rear. Open plan to Dining Room.

Utility

With washing machine and tumble dryer. Door to rear.

Bathroom

With corner shower, w.c., w.h.b. and corner bath. Tiled floor and walls.

Hall

With wooden flooring.

Bedroom 1

With wooden flooring and walk in wardrobe.

Ensuite

With corner shower, w.c., w.h.b. Tiled floor and partially tiled walls.

Bedroom 2

With carpet and built in wardrobe.

Bedroom 3

With carpet and built in wardrobe.

Bedroom 4

With carpet.

DIRECTIONS

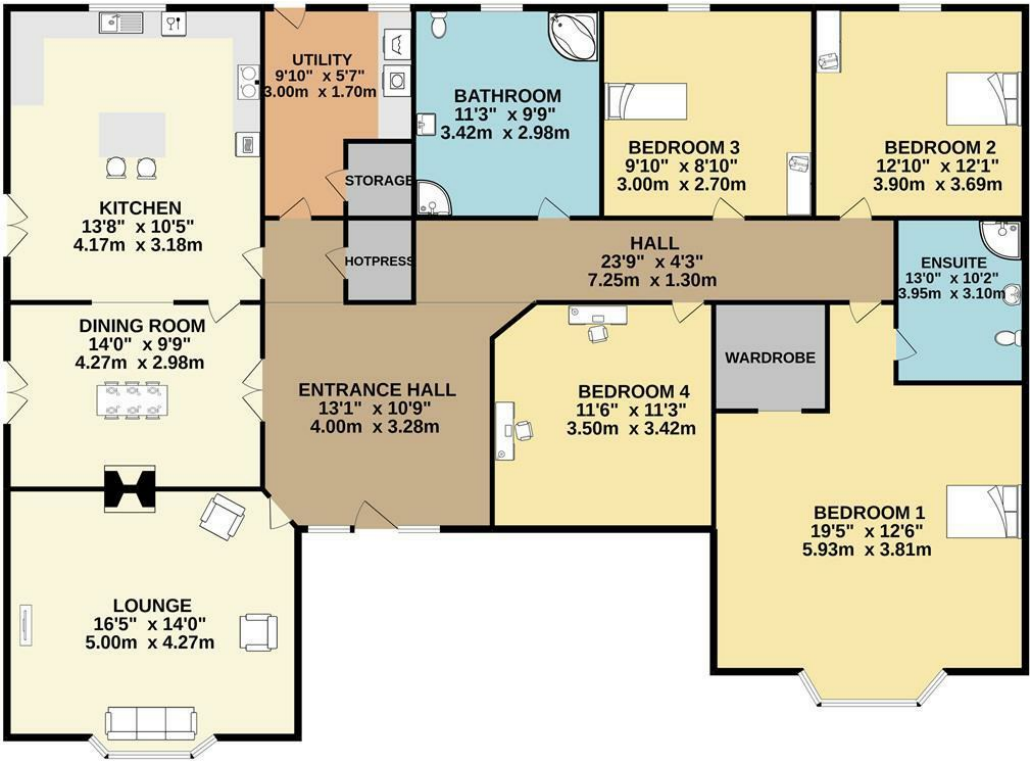
From Dublin travel along the M3 and exit at junction 8 into Navan. Travel towards Navan Town and at the fourth set of traffic lights turn right up Flowerhill. Take the first left and at the traffic lights continue straight. Continue straight on the Ratholdren Road for c..4km and the property is located on your right hand side.





FLOOR PLAN

GROUND FLOOR



TOTAL FLOOR AREA: 1750sq.ft. (162.6 sq.m.) approx.
Whilst every attempt has been made to ensure the accuracy of the floorplan contained here, measurements of doors, windows, rooms and any other items are approximate and no responsibility is taken for any error, omission or mis-statement. This plan is for illustrative purposes only and should be used as such by any prospective purchaser. The services, systems and appliances shown have not been tested and no guarantee as to their operability or efficiency can be given.
Made with Metropix ©2022