








New to the market is 7 Mc Dermot Villas a lovely 3 bedroom mid terrace house which was extended to accommodate a Shower Room and rear back hall.

The property extends to c. 86.8 sq.m., has rear vehicular access and is located in a quiet and well established residential area.

7 McDermott Villas Navan Co. Meath C15X6K5

 934.00 sq ft

 3 Bedrooms

 2 Bathrooms

INTRODUCTION

The property is very close to the Town Centre, Navan Hospital and only minutes walk from local amenities and sporting facilities.

There is an enclosed garden to the front, a concrete path and automated gated rear access.

The back garden is spacious, not overlooked and has a garage suitable for parking a car. An extremely cosy and welcoming property, which would make an ideal family home.

Accommodation includes Entrance Hall, Lounge, Sitting Room, Kitchen, Shower Room, 3 Bedrooms and Bathroom.

FIXTURES & FITTINGS

All flooring, blinds, curtains, light fittings, oven, hob, extractor fan and fridge are included in the sale.

FEATURES

- Well maintained throughout
- Enclosed front lawn
- Large rear garden with garage
- Automated gated access to the rear
- Vehicular laneway to the rear of the garden
- Shed
- Aluminium double glazed windows
- Gas central heating
- Mains water
- Mains sewerage

DIRECTIONS

From Dublin travel into Navan on the M3. Take Junction 8 Navan South. Travel to the roundabout and take the 1st exit. At the 2nd set of traffic lights turn left. Continue to the roundabout and take the third exit into the town. At the traffic lights turn left. Continue straight up Brews Hill. At the traffic lights turn left. Continue out the Commons road and McDermot Villas is on the left hand side. Take the left into McDermot Villas and the property is on the left hand side.

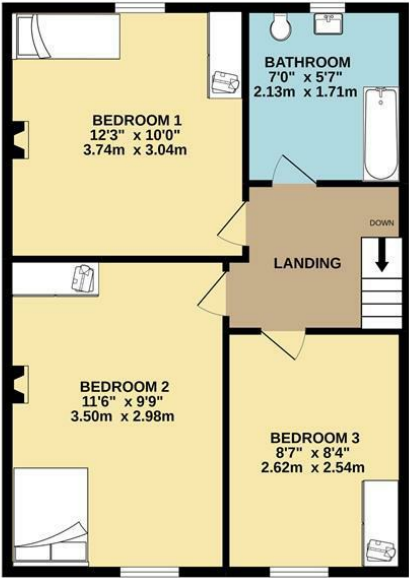


FLOOR PLAN

GROUND FLOOR



1ST FLOOR



TOTAL FLOOR AREA : 934sq.ft. (86.8 sq.m.) approx.
Whilst every attempt has been made to ensure the accuracy of the floorplan contained here, measurements of doors, windows, rooms and any other items are approximate and no responsibility is taken for any error, omission or mis-statement. This plan is for illustrative purposes only and should be used as such by any prospective purchaser. The services, systems and appliances shown have not been tested and no guarantee as to their operability or efficiency can be given.
Made with Metropix ©2022