




Raymond
Potterton

1 Maple Grove Navan Co. Meath, C15EE6H

€289,950


BER C3





An outstanding 4-bedroom semi-detached on Large Corner Site !!! set in an excellent location in the ever popular Johnstown Wood Development close to the popular town Navan.

This large family home also boasts an attractive façade a with walled in front driveway and beautiful large mature landscaped garden to rear. The location of the property is second to none and is within walking distance to schools, shops, restaurants, and a whole host of other local amenities.

1 Maple Grove Navan Co. Meath, C15EE6H

 1150.00 sq ft

 4 Bedrooms

 3 Bathrooms

INTRODUCTION

The property benefits from bright and spacious living accommodation throughout the entire property and an upgraded kitchen in recent years .

Convenient location close to Navan Town and also excellent road and bus links to Dublin city centre, This property coupled with superb living accommodation combine to create this impressive family home. This excellent home is sure to attract a lot of early interest and viewing is highly recommended to appreciate the sheer quality behind the door of number 1.

Accommodation includes Entrance Hall, Lounge, Kitchen, Dining Room, Utility room, Guest W.C., 4 Bedrooms, Master Ensuite and Family Bathroom.

FIXTURES & FITTINGS

All flooring, blinds, integrated kitchen appliances and garden shed are included in the sale.

FEATURES

- Bright & spacious living accommodation
- Gas Central heating
- Large Corner Site Landscaped rear garden
- Garden shed
- Concrete driveway
- Excellent location
- Peaceful cul de sac setting

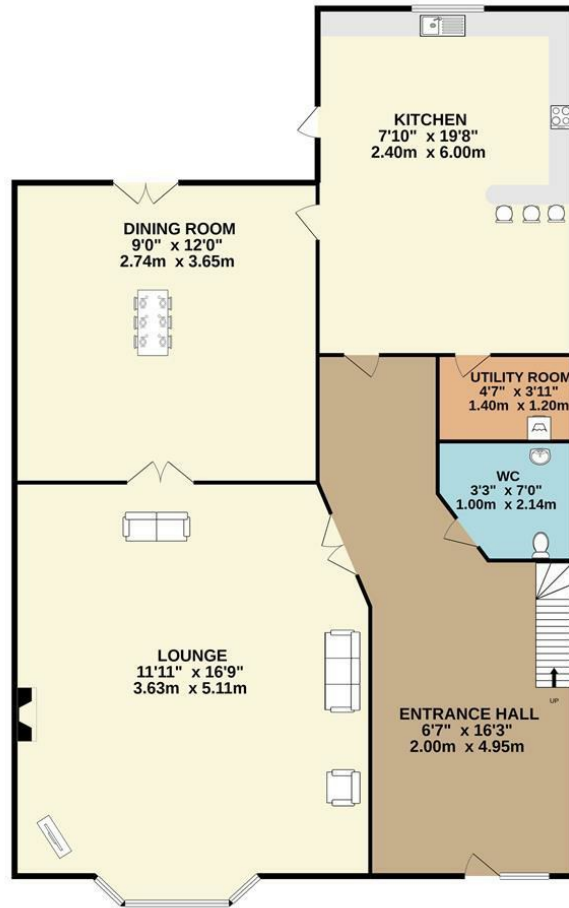
DIRECTIONS

From Dublin travel into Navan on the M3. Take Junction 8 Navan South. Travel to the roundabout and take the 1st exit. Continue to the traffic light and turn right. At the roundabout take the 2nd exit. Continue straight and take the first right into Maple. Continue straight and maple Grove is located on your left-hand side number 1 is located on the corner.

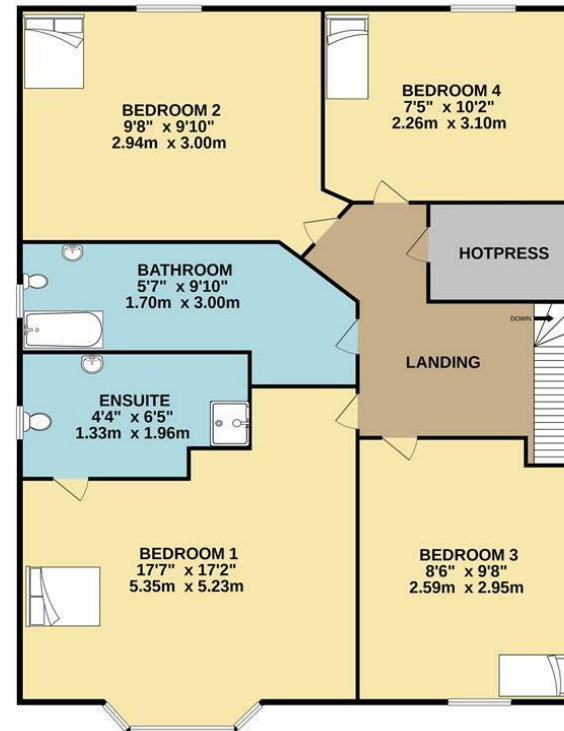


FLOOR PLAN

GROUND FLOOR



1ST FLOOR



TOTAL FLOOR AREA : 1150sq.ft. (106.8 sq.m.) approx.

Whilst every attempt has been made to ensure the accuracy of the floorplan contained here, measurements of doors, windows, rooms and any other items are approximate and no responsibility is taken for any error, omission or mis-statement. This plan is for illustrative purposes only and should be used as such by any prospective purchaser. The services, systems and appliances shown have not been tested and no guarantee as to their operability or efficiency can be given.
Made with Metropix ©2021