







Raymond Potterton & Co. proudly present this stunning home to the market. This property has been expertly upgraded with beautiful finishes throughout both internally and externally.


This is a unique house type within the development and features bright & spacious living accommodation with dual aspect windows.

The site wraps around the home and benefits of a large side garden approached by a cobble lock driveway.

21 Cois Glaisin Park Navan Meath, C15NF2X

 1055.00 sq ft

 2 Bedrooms

 3 Bathrooms

INTRODUCTION

The large L shaped garden features a garden shed a pergola and a composite decking accessed from French doors off the kitchen.

The property would make an ideal home for first time buyers, trader uppers and investors alike. Cois Glaisin is excellently located in a great residential area within walking distance to Old Johnstown Village, Supervalu Johnstown, and Primary & Secondary Schools.

Transport links to Dublin are second to none been stones throw to the M3 Motorway with 25 min drive times to the M50 and the Nx Bus on your doorstep with a 24-hour service to the city centre.

This property is sure to be popular giving its stunning finishes and sheer quality on offer so early viewing is advised.

Accommodation includes Entrance Hall, Lounge, Kitchen / Dining Room, Guest W.C/ Storeroom., 2 Bedrooms (Master Bedroom Ensuite) and Family Bathroom.

FIXTURES & FITTINGS

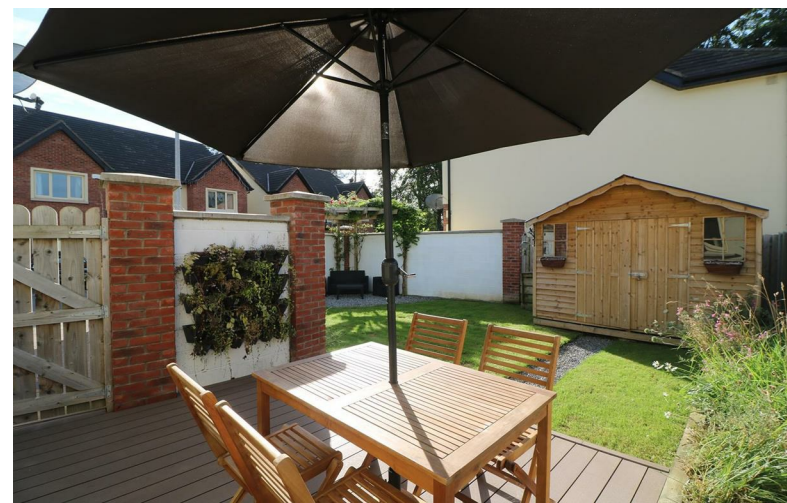
All flooring, curtains & blinds, kitchen appliances & light fittings are included in the sale.

FEATURES

- A Rated Home
- Gas fired central heating
- Upgraded throughout
- Sunny large fully landscaped garden
- Composite deck
- Cobble driveway
- Side entrance
- Turnkey Home
- 25 Minutes to M50

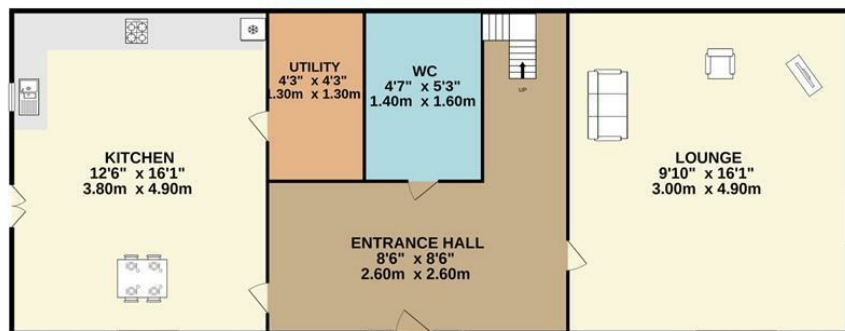
DIRECTIONS

From Dublin take the M3 Motorway to Navan and exit at Junction 8 (Navan South). Continue to the roundabout and take the 2nd exit off. Travel to traffic lights and turn left (Metges Road). Continue straight and take the 2nd turn right into Cois Glaisin. In the development take 1st turn right and second right again continue straight and take the second left and number 21 is located on the corner identified by our for-sale sign.

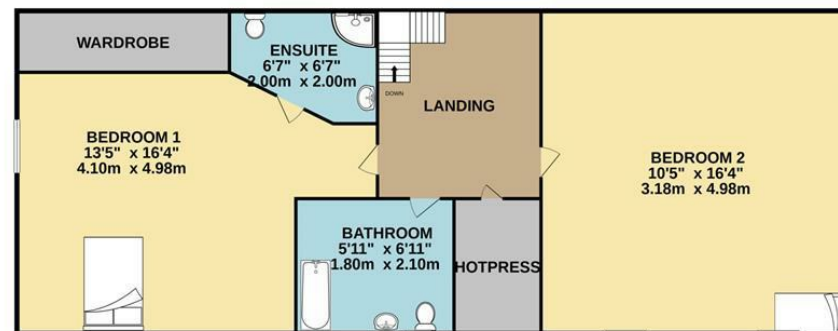


FLOOR PLAN

GROUND FLOOR



1ST FLOOR



TOTAL FLOOR AREA : 1055sq.ft. (98.0 sq.m.) approx.

Whilst every attempt has been made to ensure the accuracy of the floorplan contained here, measurements of doors, windows, rooms and any other items are approximate and no responsibility is taken for any error, omission or mis-statement. This plan is for illustrative purposes only and should be used as such by any prospective purchaser. The services, systems and appliances shown have not been tested and no guarantee as to their operability or efficiency can be given.
Made with Metropix ©2021