










A spacious 3 bedroom mid terrace house extending to c. 85 sq.m. The property is nicely positioned in the popular residential development Blackcastle Lodge and is presented in excellent condition

The property has parking to the front and an enclosed landscaped garden to the rear.

# 63 Blackcastle Lodge Navan Co. Meath, C15 W9TX

 915.00 sq ft

 3 Bedrooms

 3 Bathrooms

## INTRODUCTION

Blackcastle Lodge is close to all local amenities and only 10 minutes walk to Navan town centre / bus stop and enjoys easy access to M3 and N2 routes to Dublin.

Accommodation includes Entrance Hall, Lounge, Kitchen / Dining, 3 Bedrooms (Main ensuite) and Bathroom.

## FIXTURES & FITTINGS

All flooring, curtains, blinds, light fittings, oven, extractor fan, fridge freezer, dishwasher and washing machine are included in the sale.

## FEATURES

- Sought after residential area
- Well presented throughout
- Spacious accommodation
- Gas fired central heating
- Patio doors to the rear
- PVC double glazed windows

## DIRECTIONS

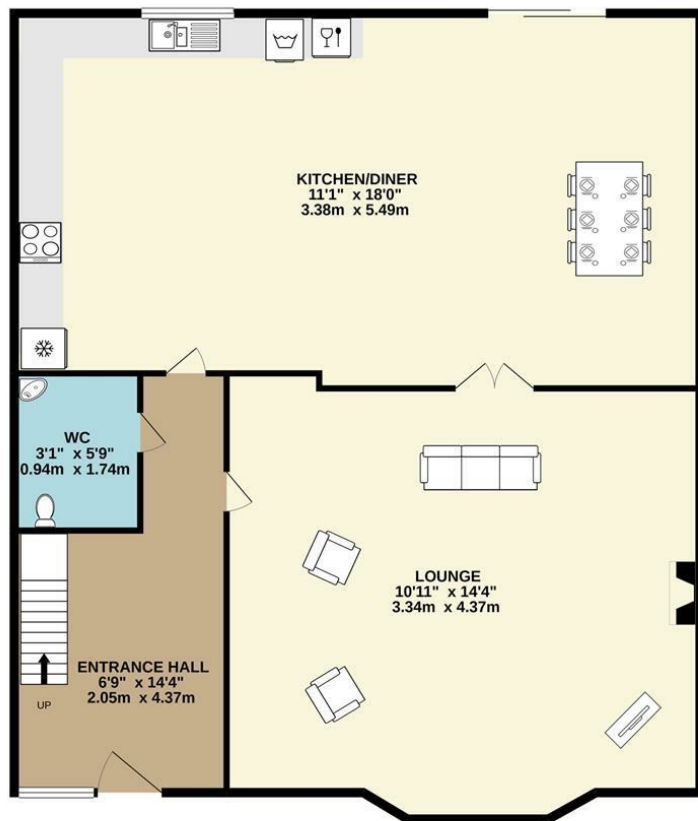
From Dublin travel along the M3 and exit at Junction 8 for Navan. Travel towards the town and turn right at the fifth set of traffic lights up Flower Hill. Continue straight and take the first right opposite Oliver Gough Hire. Take the next right into Blackcastle Lodge. In the development take the first right, continue straight and the property is located on the left hand side identified by our For Sale Sign.



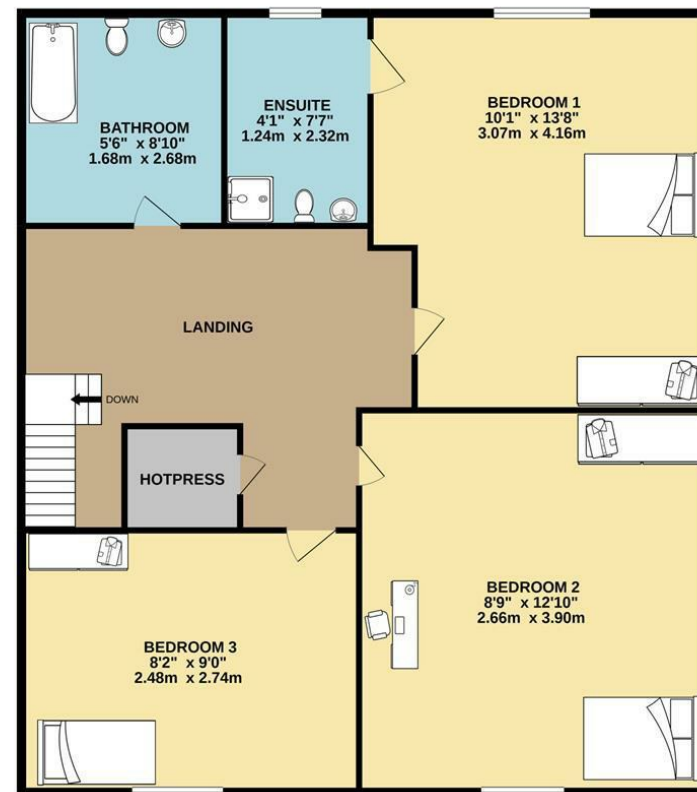


# FLOOR PLAN

GROUND FLOOR



1ST FLOOR



TOTAL FLOOR AREA : 915sq.ft. (85.0 sq.m.) approx.

Whilst every attempt has been made to ensure the accuracy of the floorplan contained here, measurements of doors, windows, rooms and any other items are approximate and no responsibility is taken for any error, omission or mis-statement. This plan is for illustrative purposes only and should be used as such by any prospective purchaser. The services, systems and appliances shown have not been tested and no guarantee as to their operability or efficiency can be given.  
Made with Metropix ©2021