








An immaculate home in a mature development of detached homes in a convenient location to all services.

No.27 is located in a particularly attractive setting with a large landscaped front garden providing parking spaces for at least three cars while to the rear the enclosed garden enjoys absolute privacy and has been hard landscaped to a very high standard which has made it a comfortable enjoyable space with extremely low maintenance.

27 La Cora Glen Delvin Co. Westmeath, N91 D6K1

 1550.00 sq ft

 4 Bedrooms

 3 Bathrooms

INTRODUCTION

Internally the home is in walk in pristine condition and has been carefully maintained and tastefully decorated.

La Cora Glen attractively situated within the village of Devlin on the Mullingar Road. The development enjoys a sense of maturity and parkland open space which is extremely rare.

FIXTURES & FITTINGS

FEATURES

- High proportion of glazing to the rear with double height ceilings in the Diningroom
- Inset stove
- Extremely comfortable home

DIRECTIONS

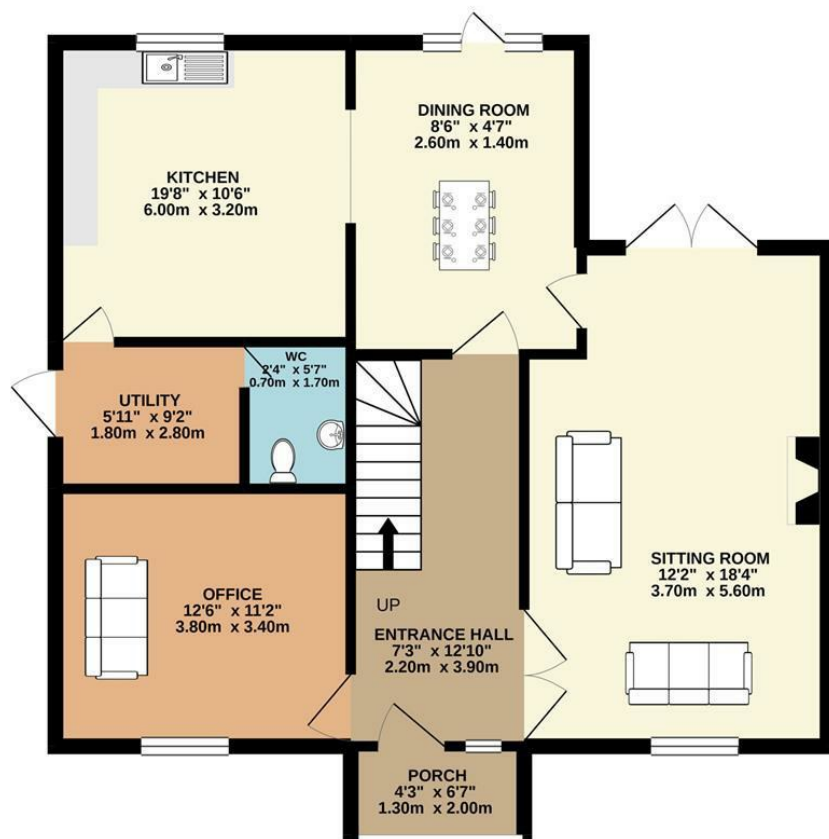
From Delvin Village proceed out the Mullingar

Road and Lacora glen is the first development on the right hand side. Turn right into the development and take an immediate right turn followed by a left and the house is on the right hand side overlooking a green.

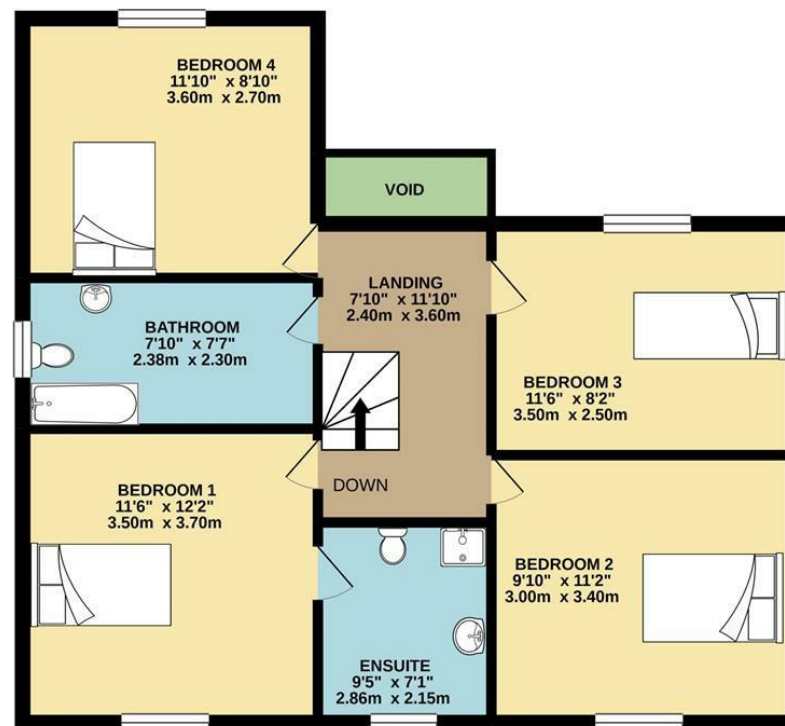


FLOOR PLAN

GROUND FLOOR



1ST FLOOR



TOTAL FLOOR AREA : 1550sq.ft. (144.0 sq.m.) approx.

Whilst every attempt has been made to ensure the accuracy of the floorplan contained here, measurements of doors, windows, rooms and any other items are approximate and no responsibility is taken for any error, omission or mis-statement. This plan is for illustrative purposes only and should be used as such by any prospective purchaser. The services, systems and appliances shown have not been tested and no guarantee as to their operability or efficiency can be given.
Made with Metropix ©2021